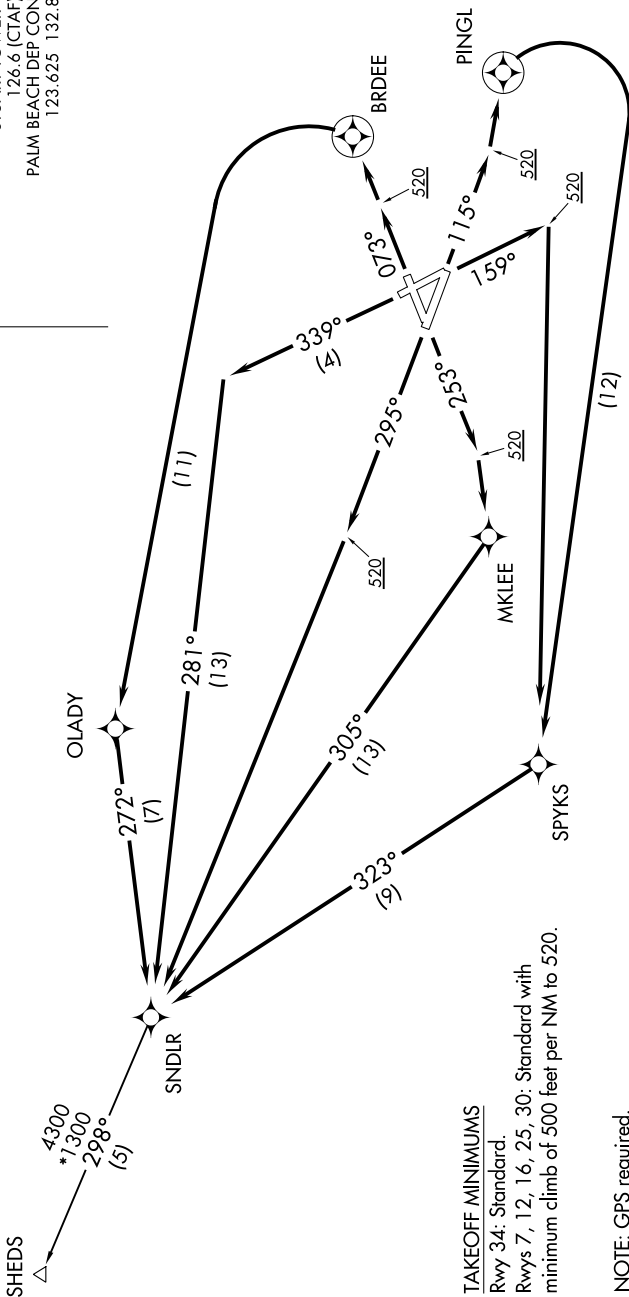


SNDLR TWO DEPARTURE (RNAV)

ATIS
134.475
GND CON
121.7
STUART TOWER*
126.6 (CTAF)
PALM BEACH DEP CON
123.625 132.8

**TOP ALTITUDE:
3000**



TAKEOFF MINIMUMS

Rwy 34: Standard.
Rwys 7, 12, 16, 25, 30: Standard with
minimum climb of 500 feet per NM to 520.

NOTE: GPS required.

NOTE: RADAR required.

NOTE: RNAV 1.

NOTE: For turbojet/turboprop aircraft only.

NOTE: Transponder code will be issued via SUA ground control or PBI APP CON when tower closed.

(NARRATIVE CONTINUED ON FOLLOWING PAGE)

NOTE: Chart not to scale.

SNDLR TWO DEPARTURE (RNAV)