

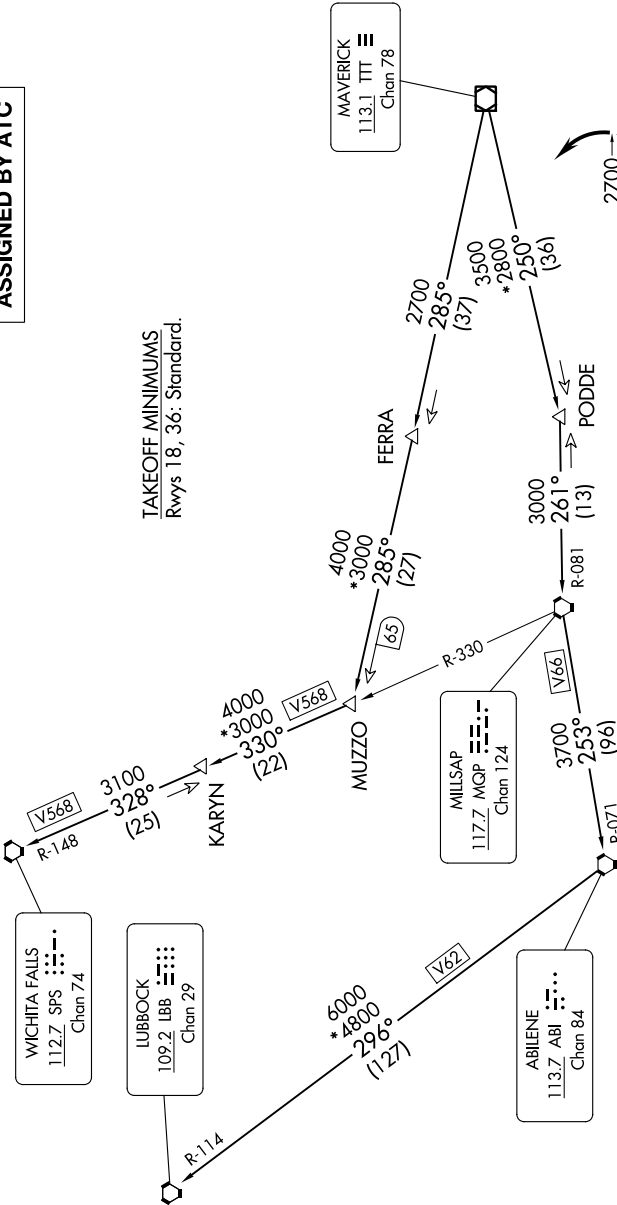
# KINGDOM FOUR DEPARTURE

REGIONAL DEP CON  
125.2 343.65  
CTAF  
122.975

**TOP ALTITUDE:  
ASSIGNED BY ATC**

RADAR and DME required.

**TAKEOFF MINIMUMS**  
Rwys 18, 36: Standard.



- NOTE: LUBBOCK Transition: For all aircraft overlying the MQP VORTAC westbound or direct.
- NOTE: MILLSAP Transition: For all aircraft overlying the MQP VORTAC westbound or direct.
- NOTE: PODDE Transition: ATC assigned.
- NOTE: WICHITA FALLS Transition: For all aircraft landing within the Wichita Falls terminal area or overlying the SPS VORTAC.
- NOTE: For all aircraft requesting 17000 and below.

NOTE: Chart not to scale.

(CONTINUED ON FOLLOWING PAGE)

# KINGDOM FOUR DEPARTURE