


APP CRS	Rwy Idg	4001
357°	TDZE	588
	Apt Elev	590

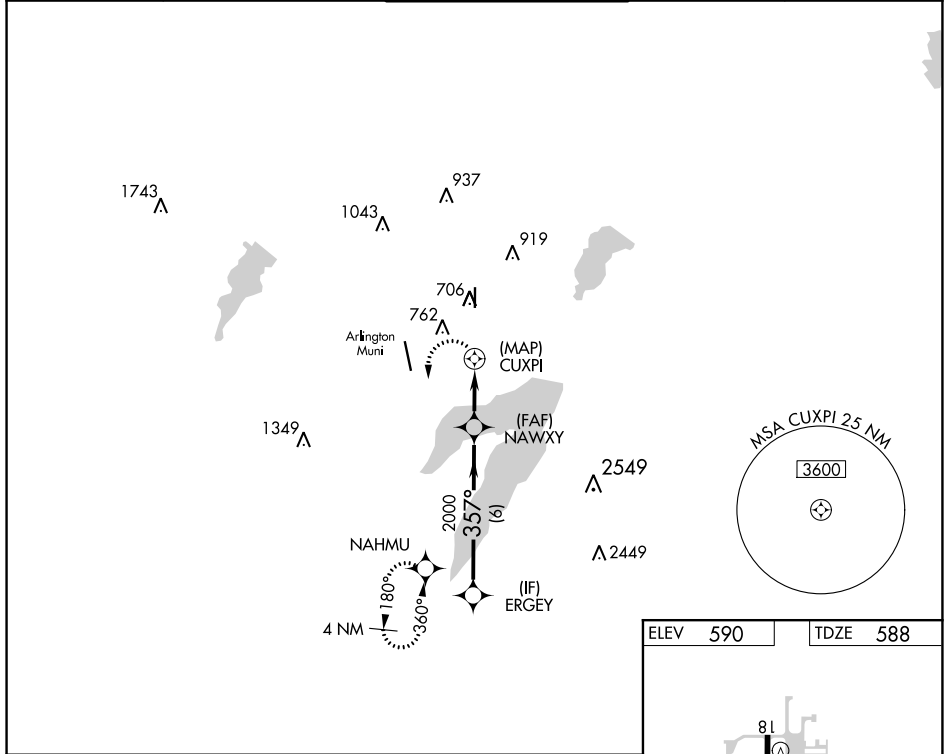
AL-9209 (FAA)

RNAV (GPS) RWY 36

GRAND PRAIRIE MUNI (GPM)

RADAR required. RNP APCH - GPS.		MISSED APPROACH: Climbing left turn to 2400 direct NAHMU and hold.
	Circling Rwy 18 NA at night.	

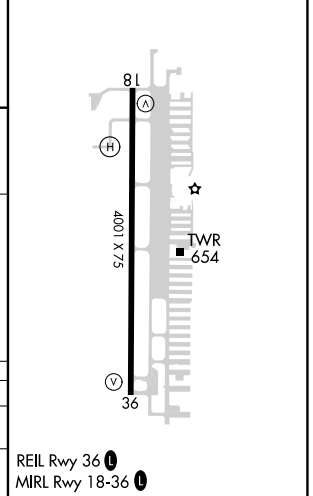
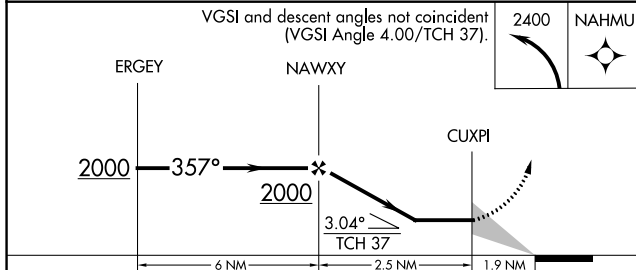
AWOS-3P 118.475	REGIONAL APP CON 135.975 379.9	GRAND PRAIRIE TOWER ★ 128.55 (CTAF) 0	GND CON 121.15	UNICOM 123.075
---------------------------	--	--	--------------------------	--------------------------



SC-2, 03 OCT 2024 to 31 OCT 2024

SC-2, 03 OCT 2024 to 31 OCT 2024

ELEV	590	TDZE	588
------	------------	------	------------



CATEGORY	A	B	C	D
LNVA MDA	1020-2½	432 (500-2½)		NA
CIRCLING	1100-2½ 510 (600-2½)	1280-2½ 690 (700-2½)		NA

REIL Rwy 36 **0**
MIRL Rwy 18-36 **0**