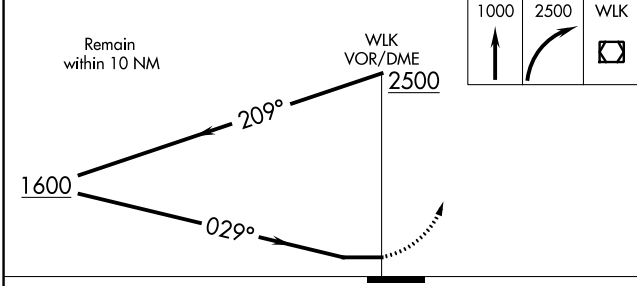
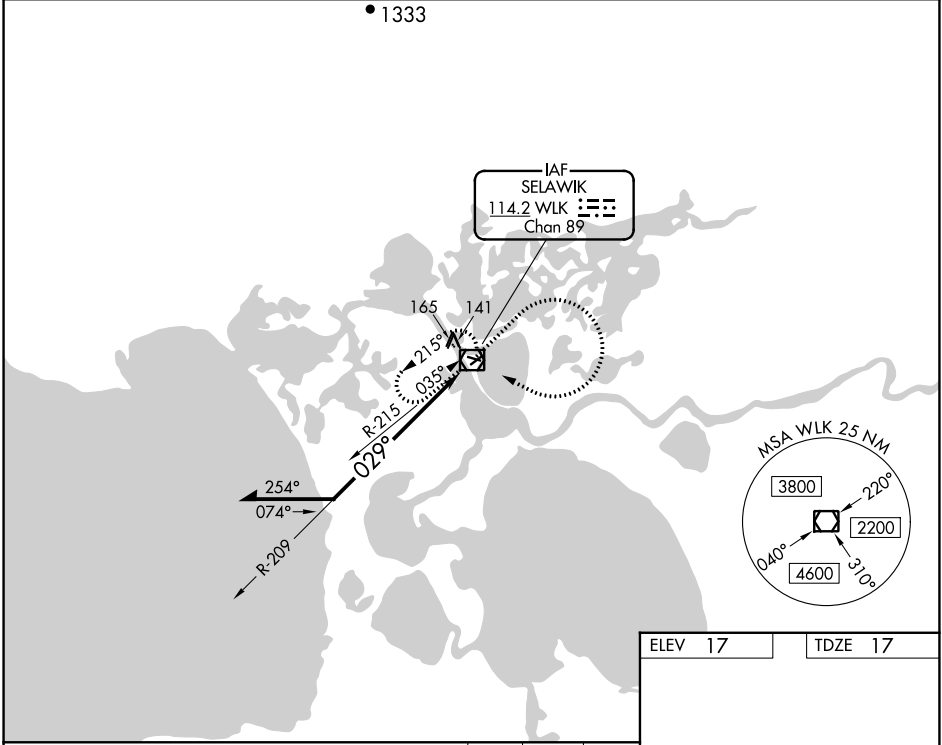


VOR/DME WLK 114.2 Chan 89	APP CRS 029°	Rwy Idg 3002 TDZE 17 Apt Elev 17
---	------------------------	---

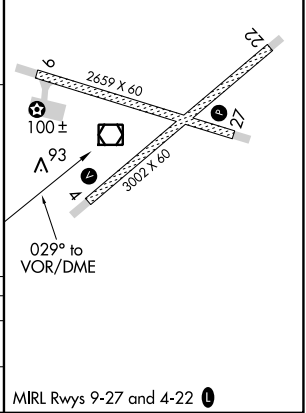
VOR RWY 4

SELAWIK (WLK) (PASK)

<p>Rwy 4 helicopter visibility reduction below 3/4 SM NA. Circling Rwy 9, 27 NA at night.</p>		<p>MISSED APPROACH: Climb to 1000 then climbing right turn to 2500 direct WLK VOR/DME and hold, continue climb-in-hold to 2500.</p>	
AWOS-3P 135.65	ANCHORAGE CENTER 119.2 263.0	KOTZEBUE RADIO 122.5	CTAF 122.7



ELEV 17	TDZE 17
---------	---------



CATEGORY	A	B	C	D
S-4	520-1	503 (600-1)	520-1½	503 (600-1½)
CIRCLING	520-1 503 (600-1)	580-1 563 (600-1)	580-1½ 563 (600-1½)	580-2 563 (600-2)

MIRL Rwy 9-27 and 4-22

AK, 31 OCT 2024 to 26 DEC 2024

AK, 31 OCT 2024 to 26 DEC 2024