

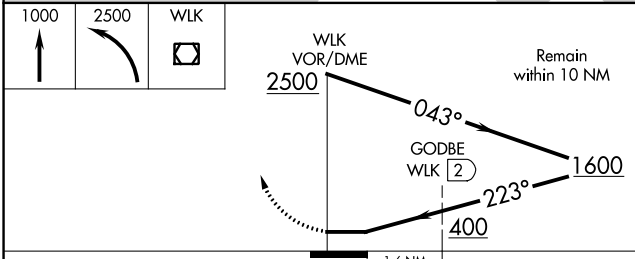
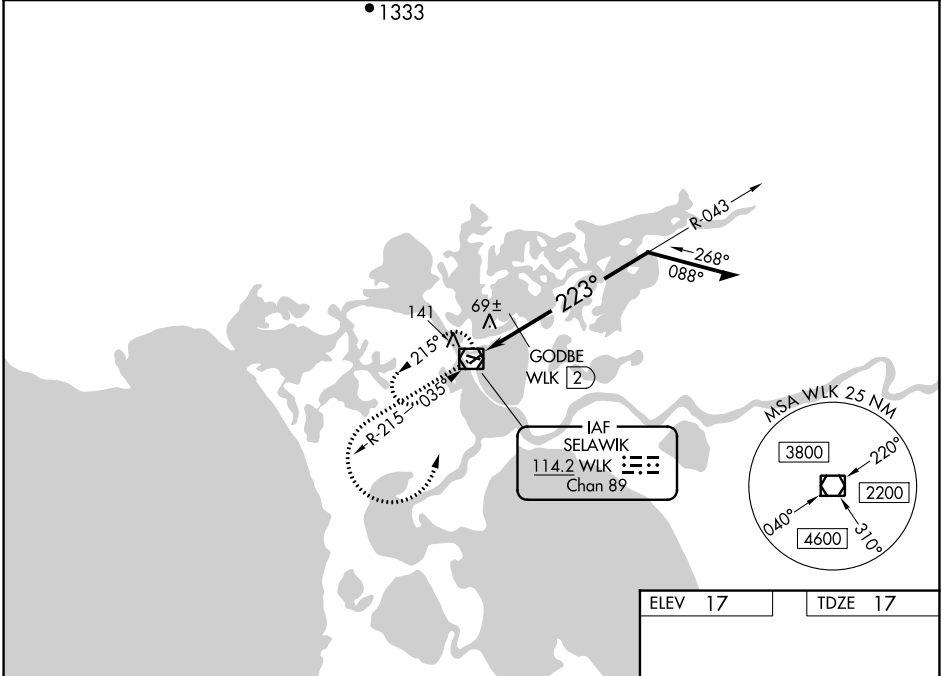
VOR/DME WLK 114.2 Chan 89	APP CRS 223°	Rwy Idg 3002 TDZE 17 Apt Elev 17
---	------------------------	---

VOR RWY 22
SELAWIK (WLK) (PASK)

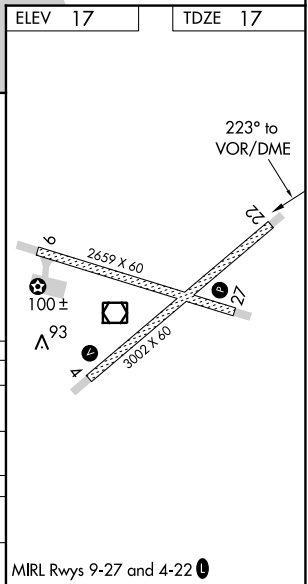
◀ Circling Rwy 9, 27 NA at night.

MISSED APPROACH: Climb to 1000 then climbing left turn to 2500 direct WLK VOR/DME and hold, continue climb-in-hold to 2500.

AWOS-3P 135.65	ANCHORAGE CENTER 119.2 263.0	KOTZEBUE RADIO 122.5	CTAF 122.7
--------------------------	--	--------------------------------	----------------------



CATEGORY	A	B	C	D
S-22	400-1	383 (400-1)	400-1¼	383 (400-1¼)
CIRCLING	480-1 463 (500-1)	580-1 563 (600-1)	580-1½ 563 (600-1½)	580-2 563 (600-2)
GODBE FIX MINIMUMS				
S-22	340-1 323 (400-1)			
CIRCLING	480-1 463 (500-1)	580-1 563 (600-1)	580-1½ 563 (600-1½)	580-2 563 (600-2)



AK, 31 OCT 2024 to 26 DEC 2024

AK, 31 OCT 2024 to 26 DEC 2024