

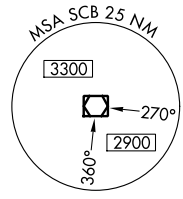
VOR/DME SCB <b>111.0</b> Chan <b>47</b>	APP CRS <b>341°</b>	Rwy Idg TDZE Apt Elev	<b>4200</b> <b>1319</b> <b>1325</b>
---	------------------------	-----------------------------	---

# VOR/DME RWY 35

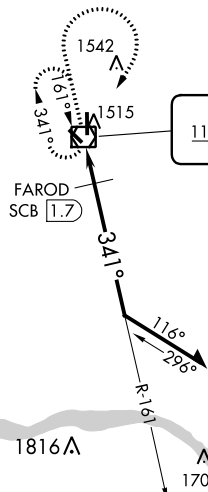
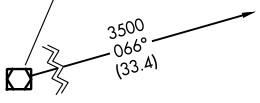
SCRIBNER STATE (SCB)

<p><b>NA</b> Use Fremont altimeter setting.</p>	<p>MISSED APPROACH: Climb to 3000 then right turn direct SCB VOR/DME and hold.</p>
---	--

FET AWOS-3 <b>121.275</b>	OMAHA APP CON <b>120.1 354.05</b>	CTAF <b>122.9</b>
------------------------------	--------------------------------------	----------------------

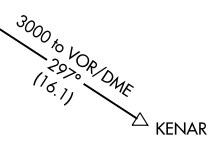


COLUMBUS  
116.95 OLU  
Chan 116(Y)

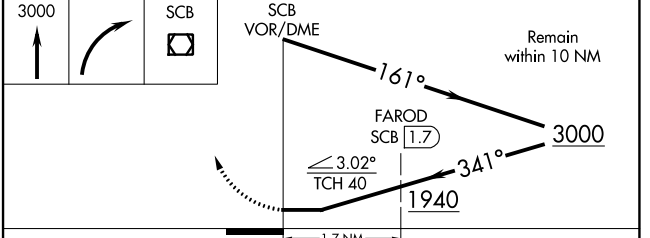
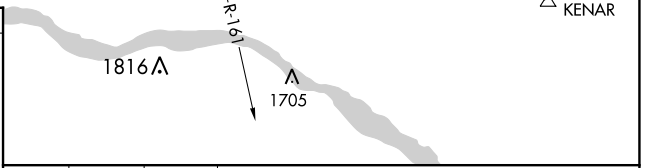
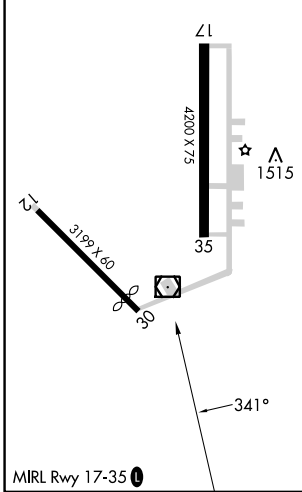


IAF  
SCRIBNER  
111.0 SCB  
Chan 47

FAROD  
SCB 1.7



ELEV 1325 TDZE 1319



CATEGORY	A	B	C	D
S-35	1800-1	481 (500-1)	NA	
<input checked="" type="checkbox"/> CIRCLING	1900-1	575 (600-1)	NA	

NC-2, 03 OCT 2024 to 31 OCT 2024

NC-2, 03 OCT 2024 to 31 OCT 2024