

WAAS CH <b>86407</b> <b>W15A</b>	APP CRS <b>146°</b>	Rwy ldg TDZE <b>1162</b> Apt Elev <b>1165</b>	<b>4501</b>
--	------------------------	---	-------------

# RNAV (GPS) RWY 15

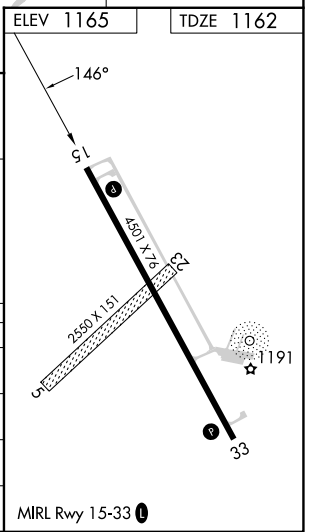
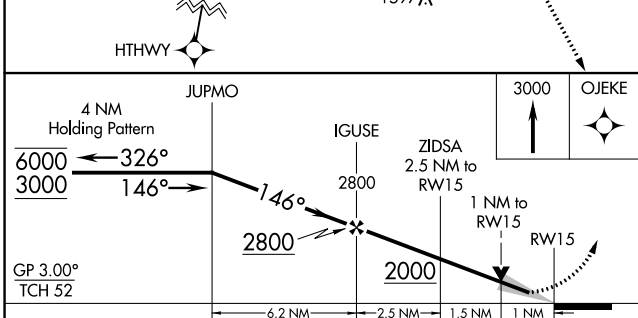
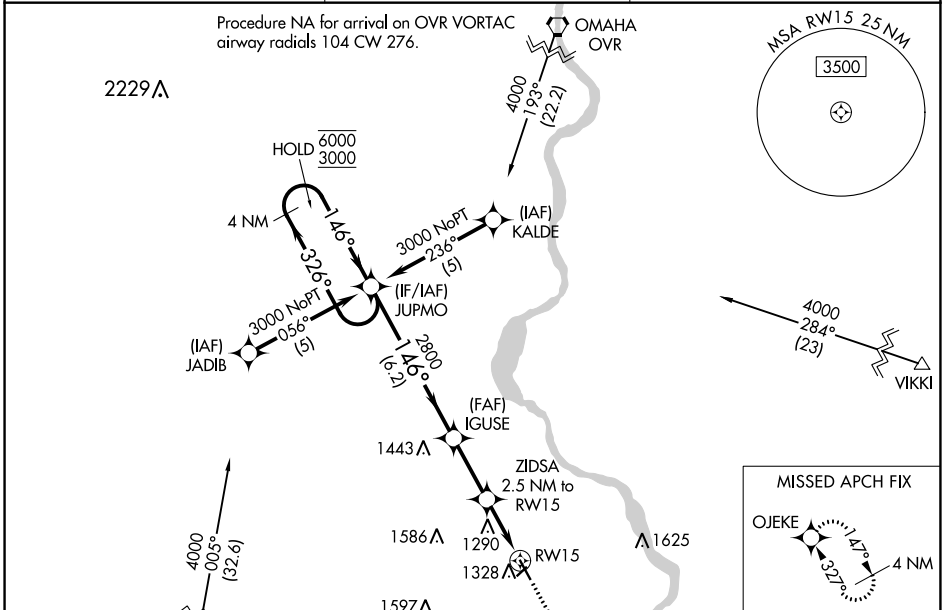
NEBRASKA CITY MUNI (AFK)

RNP APCH - GPS.

**⚠** Circling NA to Rws 5 and 23. For uncompensated Baro-VNAV systems, LNAV/VNAV NA below -17°C or above 54°C.

MISSED APPROACH: Climb to 3000 direct OJEKE and hold.

AWOS-3PT <b>128.325</b>	OMAHA APP CON <b>120.1 354.05</b>	UNICOM <b>122.7 (CTAF) 0</b>
----------------------------	--------------------------------------	---------------------------------



CATEGORY	A	B	C	D
LPV DA	1362-1	200 (200-1)		NA
LNAV/VNAV DA	1431-1	269 (300-1)		NA
LNAV MDA	1540-1	378 (400-1)		NA
<b>C</b> CIRCLING	1640-1	475 (500-1)		NA

NC-2, 03 OCT 2024 to 31 OCT 2024

NC-2, 03 OCT 2024 to 31 OCT 2024