

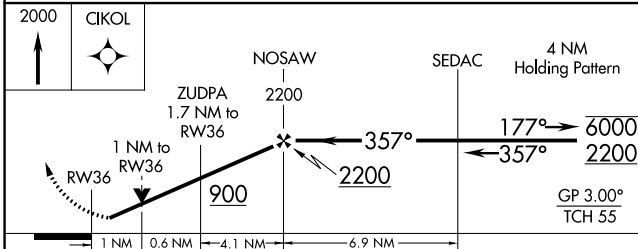
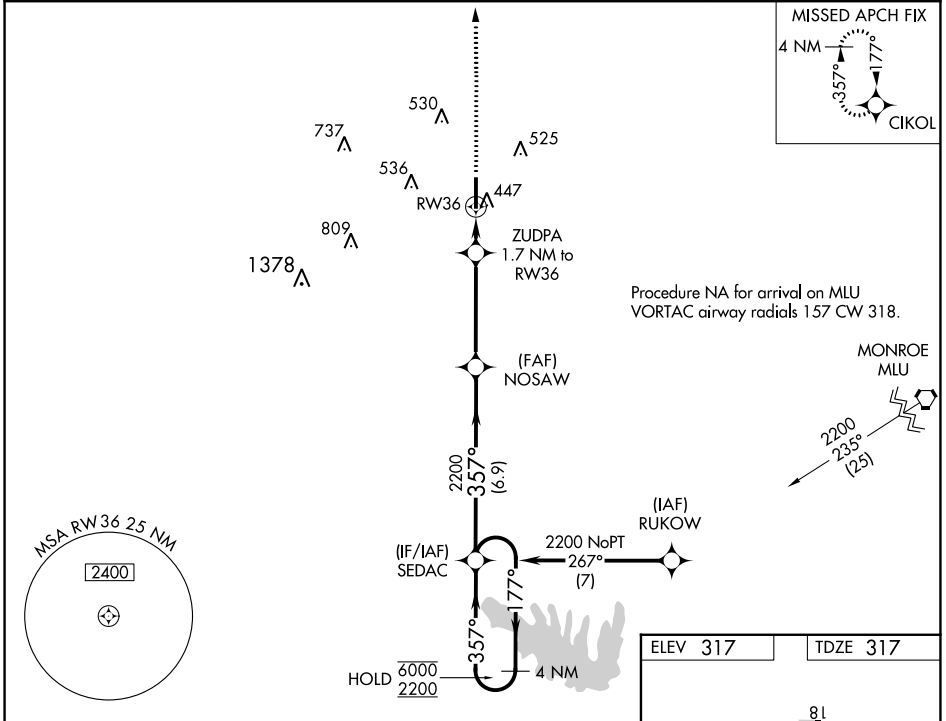
WAAS CH <b>86722</b> <b>W36A</b>	APP CRS <b>357°</b>	Rwy Idg TDZE Apt Elev	<b>6002</b> <b>317</b> <b>317</b>
--	------------------------	-----------------------------	---

# RNAV (GPS) RWY 36

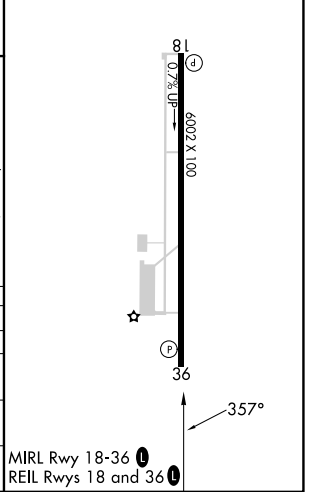
RUSTON RGNL (RSN)

RNP APCH - GPS.		MISSED APPROACH: Climb to 2000 direct CIKOL and hold.	
<p><b>▼</b> Rwy 36 helicopter visibility reduction below ¼ SM NA.  <b>▲</b> For uncompensated Baro-VNAV systems, LNAV/VNAV NA below -15°C or above 54°C.</p>			

AWOS-3PT <b>119.525</b>	MONROE APP CON * <b>126.9 307.9</b>	CLNC DEL <b>118.8</b>	UNICOM <b>122.7 (CTAF) 0</b>
----------------------------	--	--------------------------	---------------------------------



ELEV 317	TDZE 317
----------	----------



CATEGORY	A	B	C	D
LPV DA		602-¾	285 (300-¾)	
LNAV/VNAV DA		628-¾	311 (400-¾)	
LNAV MDA	700-¾	383 (400-¾)	700-1	383 (400-1)
CIRCLING	760-1 443 (500-1)	780-1 463 (500-1)	900-1½ 583 (600-1½)	960-2 643 (700-2)

SC-4, 08 AUG 2024 to 05 SEP 2024

SC-4, 08 AUG 2024 to 05 SEP 2024