

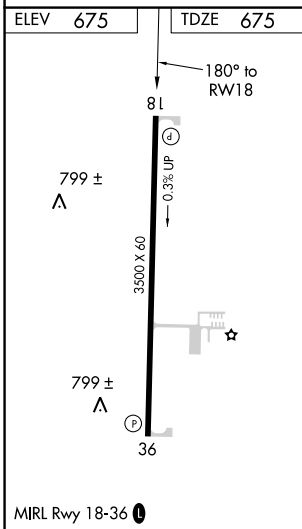
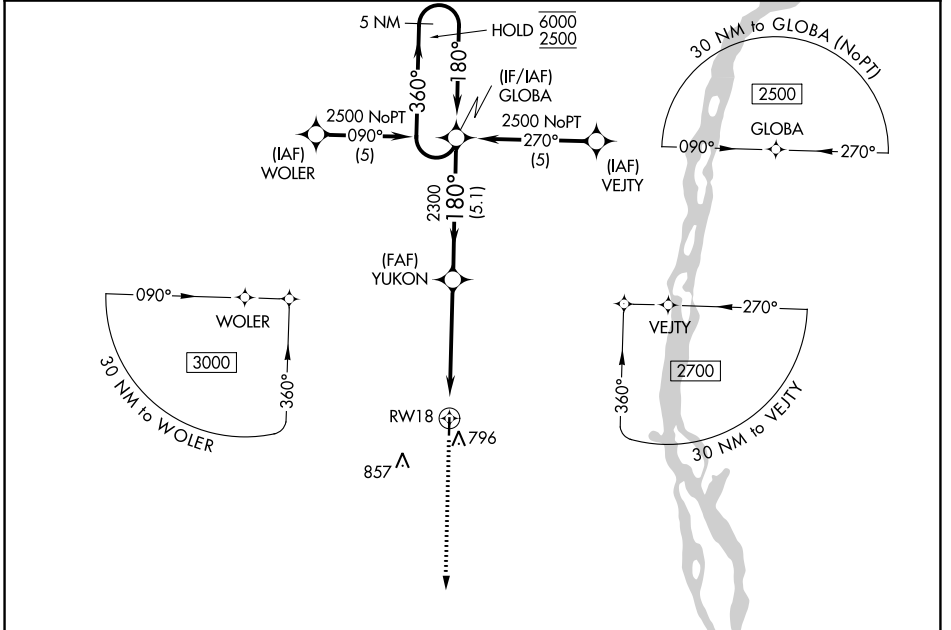
WAAS CH 50401 W18A	APP CRS 180°	Rwy Idg TDZE Apt Elev	3500 675 675
--	------------------------	-----------------------------	---

RNAV (GPS) RWY 18

LEWIS COUNTY RGNL (6M6)

RNP APCH.	<p>Baro-VNAV NA. Use Quincy altimeter setting; when not received use Kirksville altimeter setting: increase LPV DA to 1098 feet; increase LNAV/VNAV DA to 1145 feet; increase all MDA 80 feet.</p>	<p>MISSED APPROACH: Climb to 2300 direct GRITE and hold.</p>
-----------	---	--

UIN ASOS 121.425	KANSAS CITY CENTER 126.225 317.775	UNICOM 122.7 (CTAF) 0
----------------------------	--	---------------------------------



<p>GRITE 360° to 180° 4 NM</p>		<p>1643 A</p>	
<p>2300 GRITE</p>		<p>4 NM Holding Pattern</p>	
<p>YUKON 2300</p>		<p>GLOBA 6000/2500</p>	
<p>RWY 18 4.9 NM</p>		<p>GP 3.00° TCH 40</p>	
CATEGORY	A	B	C
LPV DA	1035-1¼	360 (400-1¼)	NA
LNAV/VNAV DA	1082-1½	407 (500-1½)	NA
LNAV MDA	1220-1	545 (600-1)	NA

NC-3, 03 OCT 2024 to 31 OCT 2024

NC-3, 03 OCT 2024 to 31 OCT 2024