

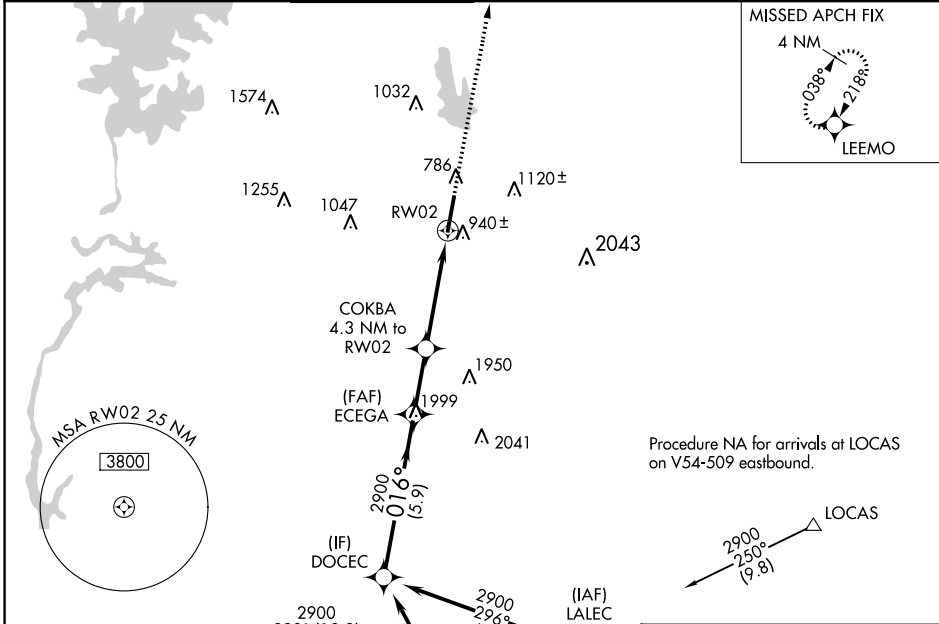
WAAS CH <b>93903</b> <b>W02A</b>	APP CRS <b>016°</b>	Rwy Idg TDZE Apt Elev	<b>7400</b> <b>667</b> <b>705</b>
--	------------------------	-----------------------------	---

# RNAV (GPS) RWY 2

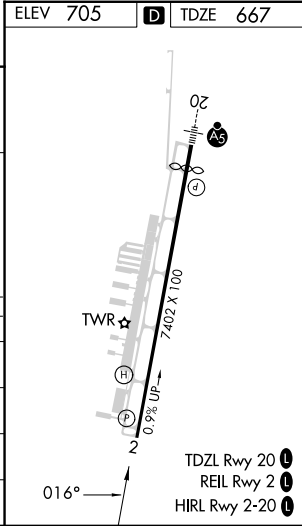
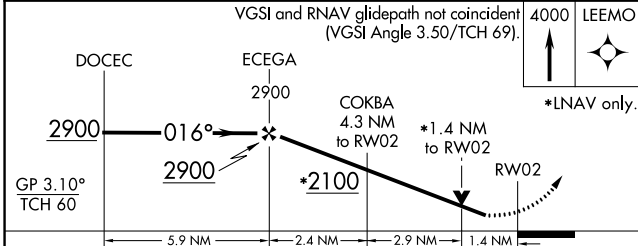
CONCORD-PADGETT RGNL (JQF)

RNP APCH.					MISSED APPROACH: Climb to 4000 direct LEEMO and hold, continue climb-in-hold to 4000.	
▼ Rwy 2 helicopter visibility reduction below 3/4 SM NA. ▲ For uncompensated Baro-VNAV systems, LNAV/VNAV NA below -16°C or above 45°C.						

ATIS* <b>133.675</b>	CHARLOTTE APP CON <b>128.325 307.8</b>	CONCORD TOWER* <b>134.65 (CTAF) 0</b>	GND CON <b>121.85</b>	CLNC DEL <b>118.55</b>	CLNC DEL <b>127.25</b> (when twr closed)	UNICOM <b>122.95</b>
-------------------------	---	--	--------------------------	---------------------------	--	-------------------------



ELEV 705	<b>D</b> TDZE 667
----------	-------------------



CATEGORY	A	B	C	D
LPV DA		986-1 1/8	319 (300-1 1/8)	
LNAV/VNAV DA		1220-1 1/8	553 (600-1 1/8)	
LNAV MDA	1240-1	573 (600-1)	1240-1 1/8	573 (600-1 1/8)
<b>C</b> CIRCLING	1300-1	595 (600-1)	1480-2 1/4 775 (800-2 1/4)	1480-2 1/2 775 (800-2 1/2)

SE-2, 31 OCT 2024 to 28 NOV 2024

SE-2, 31 OCT 2024 to 28 NOV 2024