

(KRITR6.KRITR) 24081

KRITR SIX DEPARTURE (RNAV)

AL-9155 (FAA)

CONCORD-PADGETT RGNL (JQF)

CONCORD, NORTH CAROLINA

CHARLOTTE DEP CON
 128.325 307.8
 ATIS ★
 133.675
 CLNC DEL
 118.55
 CLNC DEL (when twr closed)
 127.25
 GND CON
 121.85
 CONCORD TOWER ★
 134.65 (CTAF)
 UNICOM
 122.95

TOP ALTITUDE:
3000

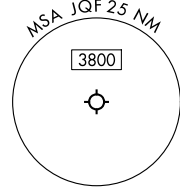
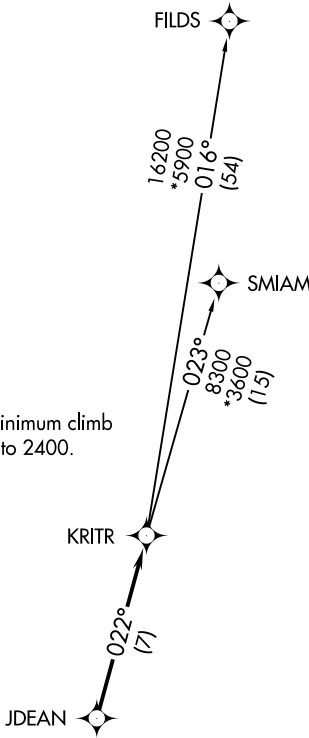
RNAV 1 - DME/DME/IRU or GPS.

RADAR required.

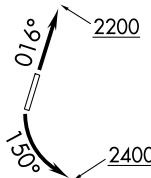
TAKEOFF MINIMUMS

Rwy 2: Standard.

Rwy 20: Standard with minimum climb of 320' per NM to 2400.



- NOTE: For turbo jets only.
- NOTE: Transponder code will be issued via PDC or Charlotte CLNC DEL.
- NOTE: If unable to accept climb rates, advise ATC on initial contact.
- NOTE: Upon reaching 10000 MSL, accelerate to and maintain 280K, if unable advise ATC.



NOTE: Chart not to scale.



DEPARTURE ROUTE DESCRIPTION

TAKEOFF RUNWAY 2: Climb on heading 016° to 2200, then on heading assigned by ATC, thence. . . .

TAKEOFF RUNWAY 20: Climbing left turn heading 150° to 2400, then on heading assigned by ATC, thence. . . .

. . . .on RADAR vectors to JDEAN, then on track 022° to KRITR, then on assigned transition. Maintain 3000. Expect clearance to filed altitude within 10 minutes after departure.

FILDS TRANSITION (KRITR6.FILDS)

SMIAM TRANSITION (KRITR6.SMIAM)

KRITR SIX DEPARTURE (RNAV)

(KRITR6.KRITR) 21MAR24

CONCORD, NORTH CAROLINA

CONCORD-PADGETT RGNL (JQF)

SE-2, 08 AUG 2024 to 05 SEP 2024