

KNIGHTS THREE DEPARTURE

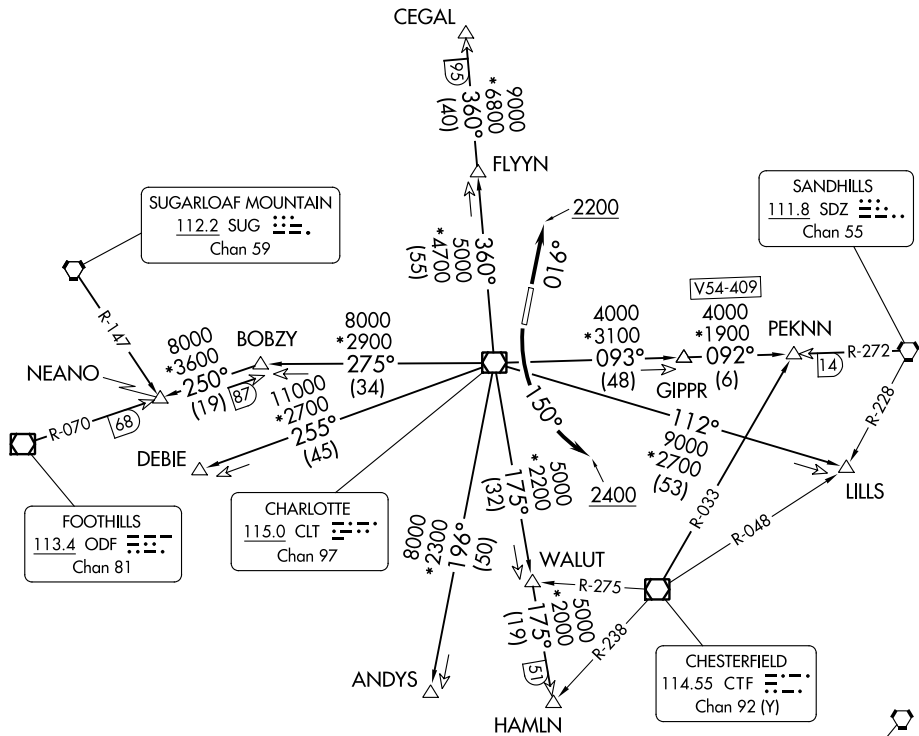
CHARLOTTE DEP CON
128.325 307.8
ATIS ★
133.675
CLNC DEL
118.55
CLNC DEL (when twr closed)
127.25
GND CON
121.85
CONCORD TOWER ★
134.65 (CTAF)
UNICOM
122.95

**TOP ALTITUDE:
3000**

RADAR and DME required.

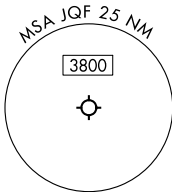
TAKEOFF MINIMUMS

Rwy 2: Standard.
Rwy 20: Standard with minimum climb of 320' per NM to 2400.



SE-2, 08 AUG 2024 to 05 SEP 2024

SE-2, 08 AUG 2024 to 05 SEP 2024



- NOTE: For propeller aircraft only.
- NOTE: Turboprops: Operate in a manner that will result in best forward speed and climb rate.
- NOTE: Transponder code will be issued via Concord ATCT or Charlotte clearance delivery.

(CONTINUED ON FOLLOWING PAGE)

NOTE: Chart not to scale.

KNIGHTS THREE DEPARTURE