

KILNS FIVE DEPARTURE (RNAV)

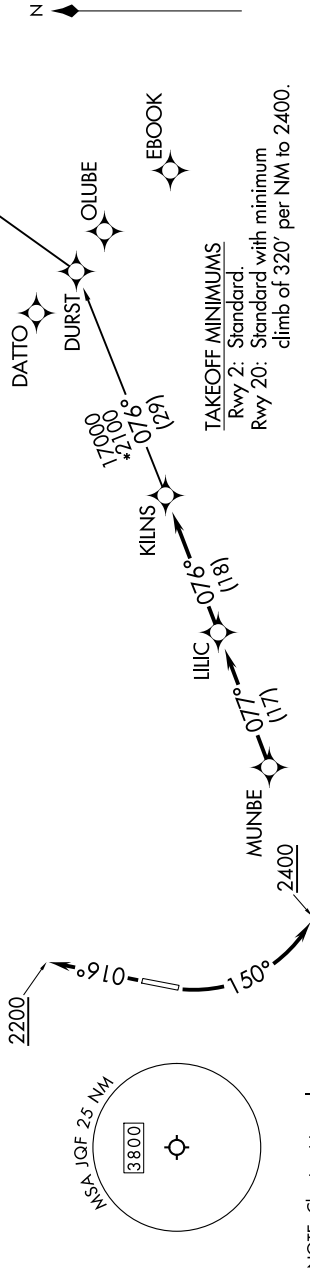
SE-2, 03 OCT 2024 to 31 OCT 2024

TOP ALTITUDE:
3000

RNAV 1 - DME/DME/IRU or GPS.
RADAR required.

CHARLOTTE DEP CON
128.325 307.8
ATIS *
133.675
CLNC DEL
118.55
CLNC DEL (when twr closed)
127.25
GND CON
121.85
CONCORD TOWER *
134.65 (CTAF)
UNICOM
122.95

NOTE: For turbojets only.
NOTE: Transponder code will be issued via PDC or Charlotte CLNC DEL.
NOTE: Upon reaching 10000 MSL, accelerate to and maintain 280K, if unable advise ATC.
NOTE: If unable to accept climb rates, advise ATC on initial contact.



NOTE: Chart not to scale.

DEPARTURE ROUTE DESCRIPTION

TAKEOFF RUNWAY 2: Climb on heading 016° to 2200, then on heading assigned by ATC, thence. . . .
TAKEOFF RUNWAY 20: Climbing left turn heading 150° to 2400, then on heading assigned by ATC, thence. . . .

. . . on RADAR vectors to MUNBE, then on depicted route to KILNS, then on AUDII transition. Maintain 3000. Expect clearance to filed altitude within 10 minutes after departure.

AUDII TRANSITION (KILNS5.AUDII)

KILNS FIVE DEPARTURE (RNAV)

SE-2, 03 OCT 2024 to 31 OCT 2024