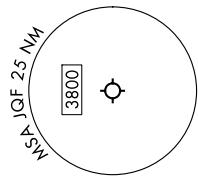
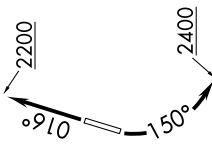
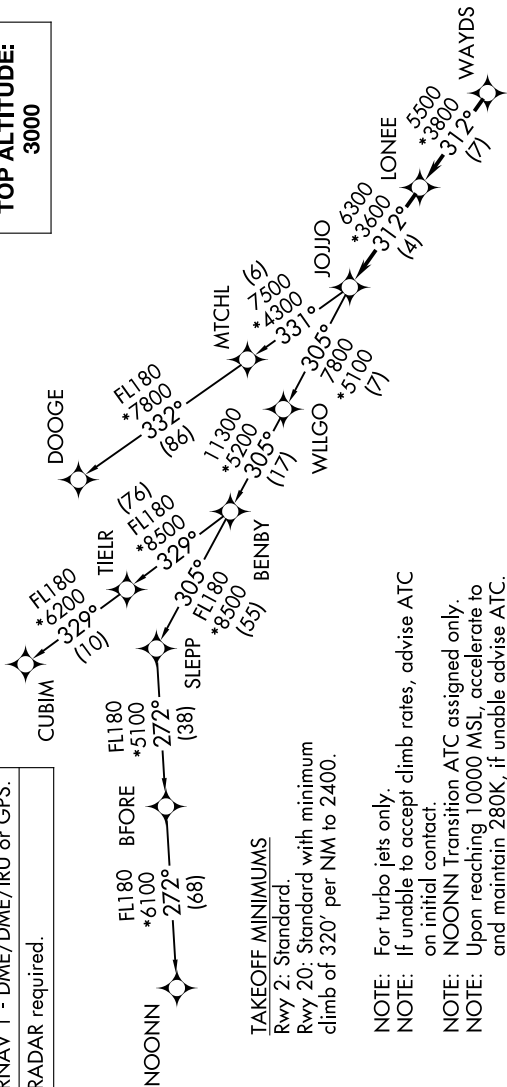


# JOJO FIVE DEPARTURE (RNAV)

CHARLOTTE DEP CON  
128.325 307.8  
ATIS \*  
133.675  
CLNC DEL  
118.55  
127.25  
GND CON  
121.85  
CONCORD TOWER \*  
134.65 (CTAF)  
UNICOM  
122.95



**TOP ALTITUDE:  
3000**



NOTE: Chart not to scale.

RNAV 1 - DME/DME/IRU or GPS.  
RADAR required.

NOONN  
FL180 \*6100  
272° (68)  
BFOR  
FL180 \*5100  
272° (38)  
SLEPP  
FL180 \*5500  
305° (155)  
BENBY  
FL180 \*5200  
305° (117)  
WILGO  
FL180 \*5100  
305° (17)  
DOOGE  
FL180 \*3200  
320° (10)  
TIELR  
FL180 \*8500  
320° (8)  
SLEPP  
FL180 \*5200  
305° (117)  
WILGO  
FL180 \*5100  
305° (17)  
JOJO  
FL180 \*5300  
312° (4)  
LONLEE  
FL180 \*3800  
312° (7)  
WAYDS  
FL180 \*3500  
312° (7)

### TAKEOFF MINIMUMS

Rwy 2: Standard.  
Rwy 20: Standard with minimum  
climb of 320' per NM to 2400.

- NOTE: For turbo jets only.
- NOTE: If unable to accept climb rates, advise ATC on initial contact.
- NOTE: NOONN Transition ATC assigned only.
- NOTE: Upon reaching 10000 MSL, accelerate to and maintain 280K, if unable advise ATC.

### DEPARTURE ROUTE DESCRIPTION

**TAKEOFF RUNWAY 2:** Climb on heading 016° to 2200, then on heading assigned by ATC, thence. . . .  
**TAKEOFF RUNWAY 20:** Climbing left turn heading 150° to 2400, then on heading assigned by ATC, thence. . . .

. . . on RADAR vectors to WAYDS, then on depicted route to JOJO. Then on assigned transition. Maintain 3000, expect filed altitude within 10 minutes after departure.

CUBIM TRANSITION (JOJO5.CUBIM)  
DOOGE TRANSITION (JOJO5.DOOGE)  
NOONN TRANSITION (JOJO5.NOONN)

# JOJO FIVE DEPARTURE (RNAV)