

WAAS CH <b>61328</b> <b>W13A</b>	APP CRS <b>134°</b>	Rwy Idg TDZE Apt Elev	<b>4001</b> <b>616</b> <b>616</b>
--	------------------------	-----------------------------	---

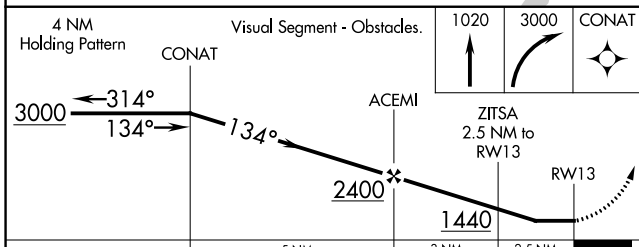
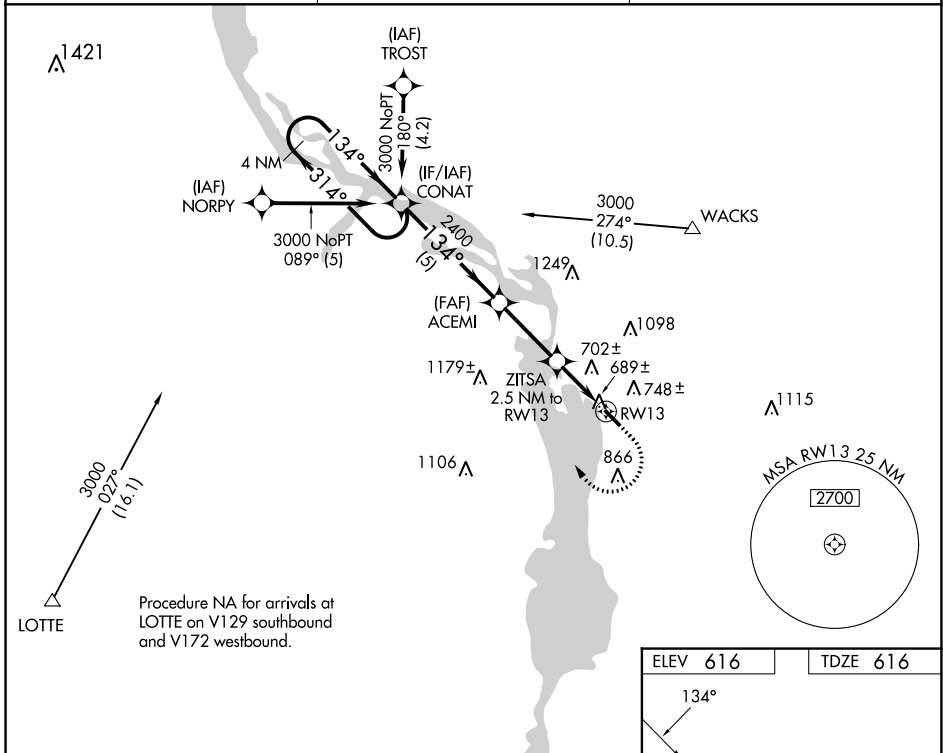
# RNAV (GPS) RWY 13

TRI-TOWNSHIP (SFY)

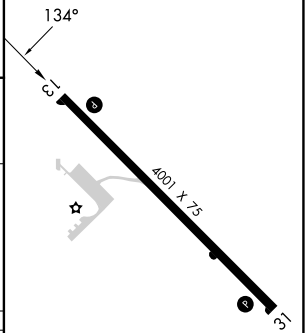
**⚠** When local altimeter setting not received, use Sterling/Rockfalls altimeter setting and increase all MDA 80 feet. Procedure NA at night. DME/DME RNP-0.3 NA. Helicopter visibility reduction below 1 SM NA.

**⚠** MISSED APPROACH: Climb to 1020 then climbing right turn to 3000 direct CONAT and hold.

AWOS-3PT <b>118.650</b>	QUAD CITY APP CON★ <b>125.95 257.8</b>	UNICOM <b>122.7 (CTAF) 0</b>
----------------------------	---	---------------------------------



ELEV 616	TDZE 616
----------	----------



CATEGORY	A	B	C	D
LP MDA	940-1	324 (400-1)		NA
LNAV MDA	960-1	344 (400-1)		NA
CIRCLING	1160-1 544 (600-1)	1220-1 604 (700-1)		NA

MIRL Rwy 13-31 0

EC-3, 31 OCT 2024 to 28 NOV 2024

EC-3, 31 OCT 2024 to 28 NOV 2024