

WAAS CH <b>78024</b> W09A	APP CRS <b>092°</b>	Rwy Idg <b>4300</b> TDZE <b>22</b> Apt Elev <b>22</b>
---------------------------------	------------------------	---

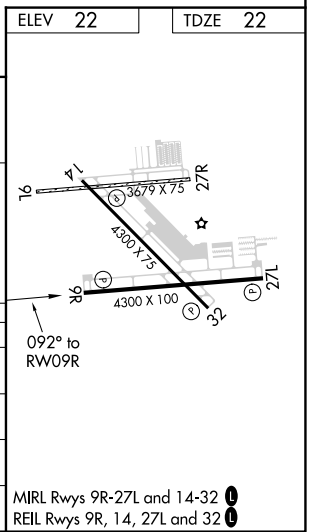
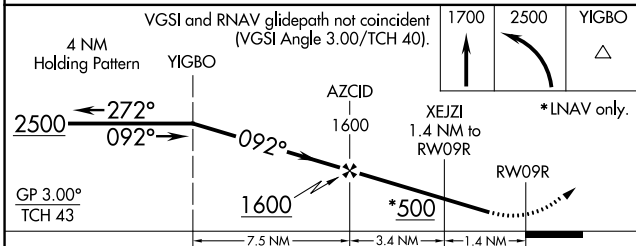
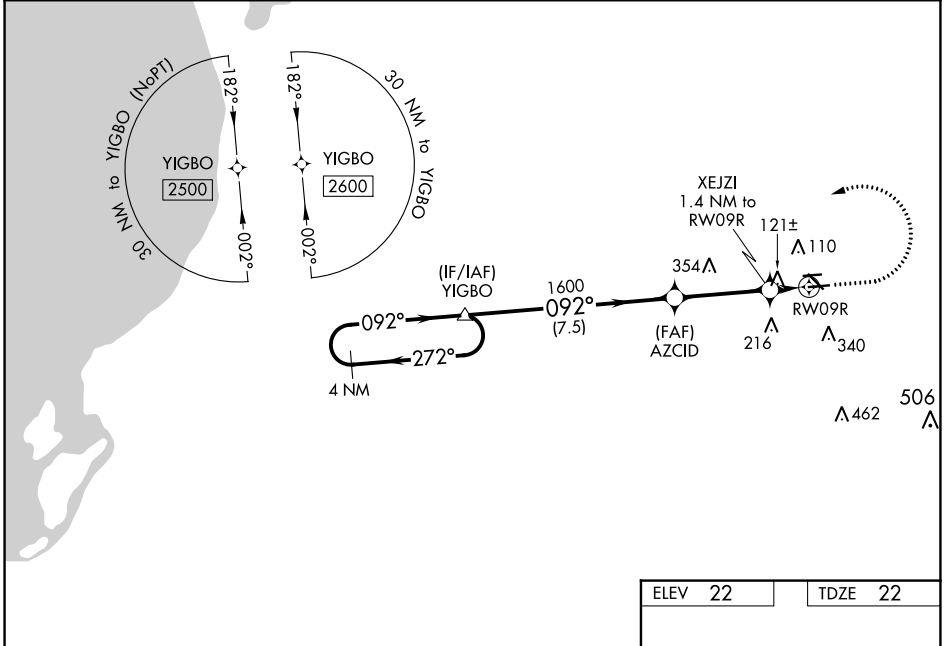
# RNAV (GPS) RWY 9R

NORTH PALM BEACH COUNTY GENERAL AVIATION (F45)

**NA** Circling NA to Rws 9L and 27R. Baro-VNAV NA when using Palm Beach Intl altimeter setting. For uncompensated Baro-VNAV systems, LNAV/VNAV NA below -1.5°C (5°F) or above 54°C (130°F). DME/DME RNP-0.3 NA. When local altimeter not received, use Palm Beach Intl altimeter setting and increase LPV DA to 300 feet; increase LNAV/VNAV DA to 316 feet; increase all MDA 40 feet and LNAV Cats C/D visibility 1/8 SM. Rwy 9R helicopter visibility reduction below 3/4 SM NA.

**MISSED APPROACH:** Climb to 1700 then climbing left turn to 2500 direct YIGBO and hold.

AWOS-3 <b>119.975</b>	PALM BEACH APP CON <b>128.3 317.4</b>	CLNC DEL <b>120.825</b>	UNICOM <b>123.075 (CTAF)</b>
--------------------------	--	----------------------------	---------------------------------



CATEGORY	A	B	C	D
LPV DA		272-7/8 250 (300-7/8)		
LNAV/VNAV DA		288-7/8 266 (300-7/8)		
LNAV MDA	420-1 398 (400-1)		420-1 1/8 398 (400-1 1/8)	
<b>CIRCLING</b>	460-1 438 (500-1)	480-1 458 (500-1)	700-2 678 (700-2)	720-2 1/4 698 (700-2 1/4)

MRL Rws 9R-27L and 14-32  
REL Rws 9R, 14, 27L and 32

SE-3, 03 OCT 2024 to 31 OCT 2024

SE-3, 03 OCT 2024 to 31 OCT 2024