

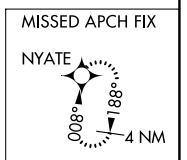
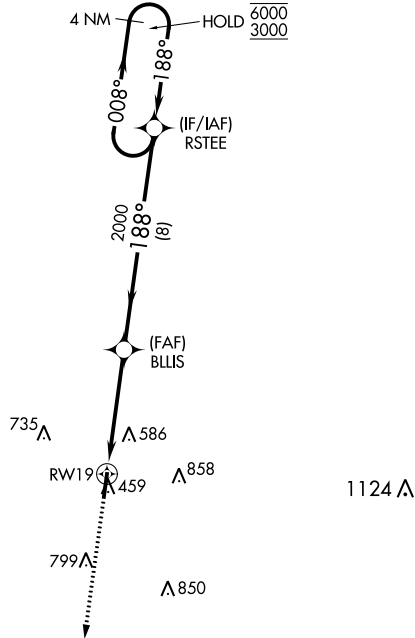
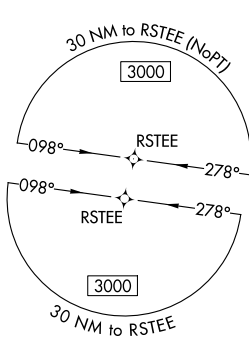
WAAS CH <b>53624</b> <b>W19A</b>	APP CRS <b>188°</b>	Rwy Idg TDZE Apt Elev	<b>5000</b> <b>431</b> <b>436</b>
--	------------------------	-----------------------------	---

# RNAV (GPS) RWY 19

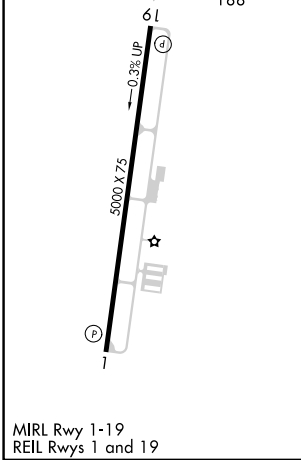
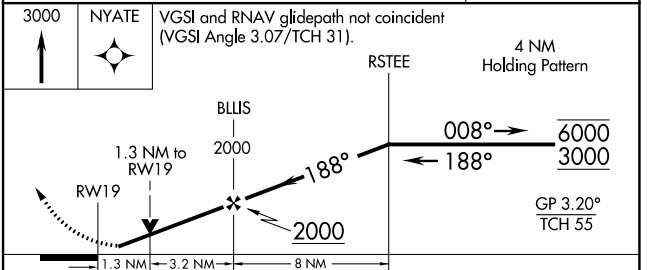
FAYETTE COUNTY (FYE)

RNP APCH - GPS.	<p><b>▼</b> Baro-VNAV and VDP NA when using Memphis Intl altimeter setting. Rwy 19 helicopter visibility reduction below <math>\frac{3}{4}</math> SM NA. When local altimeter setting not received, use Memphis Intl altimeter setting: increase LPV DA to 817 feet and all visibilities <math>\frac{1}{8}</math> SM, increase LNAV/VNAV DA to 779 feet; increase all MDA 100 feet and visibility LNAV Cat C <math>\frac{3}{8}</math> SM and Circling Cat C <math>\frac{1}{2}</math> SM.</p>	MISSED APPROACH: Climb to 3000 direct NYATE and hold.
-----------------	--	--

AWOS-3 <b>119.875</b>	MEMPHIS APP CON <b>125.8 338.3</b>	CTAF <b>122.9</b>
--------------------------	---------------------------------------	----------------------



ELEV <b>436</b>	TDZE <b>431</b>
-----------------	-----------------



CATEGORY	A	B	C	D
LPV DA		721-1	290 (300-1)	NA
LNAV/VNAV DA		683-1	252 (300-1)	NA
LNAV MDA	880-1	449 (500-1)	880- $1\frac{3}{8}$ 449 (500- $1\frac{3}{8}$ )	NA
CIRCLING	900-1 464 (500-1)	920-1 484 (500-1)	1160-2 724 (800-2)	NA

SE-1, 31 OCT 2024 to 28 NOV 2024

SE-1, 31 OCT 2024 to 28 NOV 2024