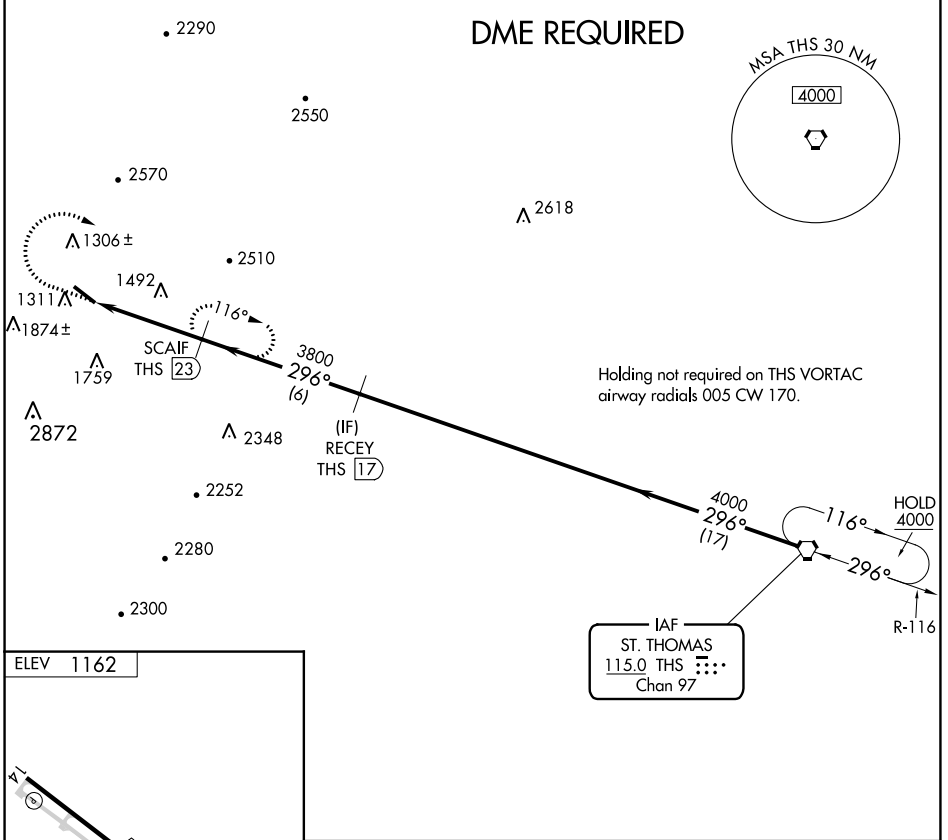


VORTAC THS <b>115.0</b> Chan <b>97</b>	APP CRS <b>296°</b>	Rwy Idg TDZE Apt Elev	<b>N/A</b> <b>N/A</b> <b>1162</b>
--	------------------------	-----------------------------	---

**VOR-A**  
BEDFORD COUNTY (HMZ)

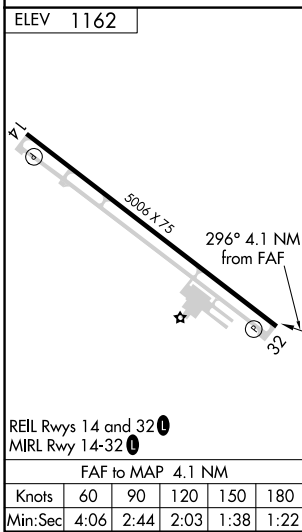
<b>▼</b> Helicopter visibility reduction below 3/4 SM NA. <b>▲</b> DME required.	MISSED APPROACH: Climb to 3200 then climbing right turn to 4000 on heading 150° and on THS VORTAC R-296 to SCAIF/23 DME and hold.
---	---

AWOS-3 <b>123.675</b>	JOHNSTOWN APP CON * <b>121.2 299.2</b>	UNICOM <b>122.7 (CTAF) 0</b>
--------------------------	---	---------------------------------



NE-4, 18 MAY 2023 to 15 JUN 2023

NE-4, 18 MAY 2023 to 15 JUN 2023



3200	4000	THS R-296	SCAIF THS 23	RECEY THS 17	THS VORTAC
↑	hdg 150°				
		THS 27.1	SCAIF THS 23	4000	4000
		3800			
		4.1 NM	6 NM	17 NM	
		CATEGORY A	CATEGORY B	CATEGORY C	CATEGORY D
		2700-1 1/4 1538 (1600-1 1/4)	2700-1 1/2 1538 (1600-1 1/2)	2700-3 1538 (1600-3)	2940-3 1778 (1800-3)
		<b>CIRCLING</b>			