

APP CRS	Rwy Idg	<b>4000</b>
<b>173°</b>	TDZE	<b>915</b>
	Apt Elev	<b>915</b>

# RNAV (GPS) RWY 17

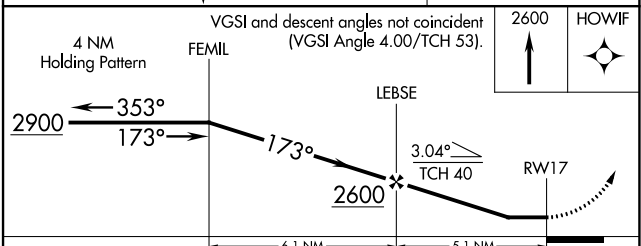
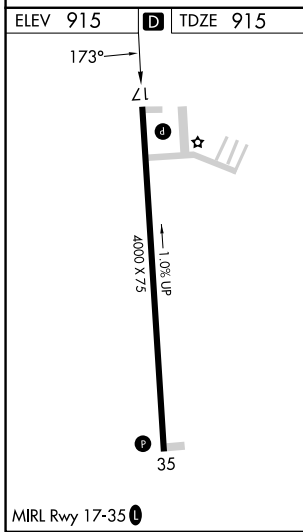
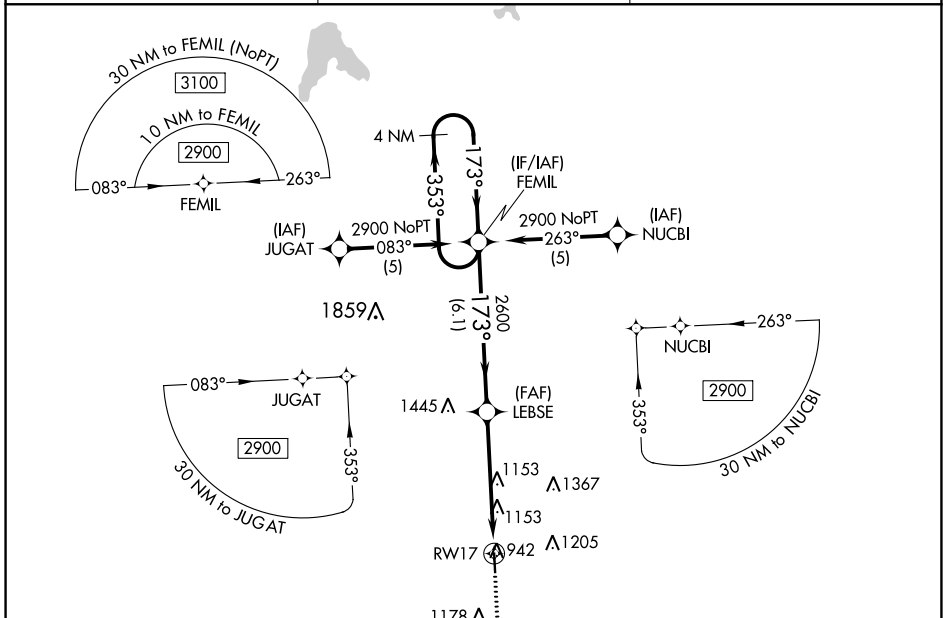
LAWRENCE SMITH MEML (L.R.Y)

RNP APCH.

When local altimeter setting not received, use Charles B Wheeler Downtown altimeter setting: increase all MDAs 100 feet and visibility Cat C ¼ mile. Procedure NA at night. Rwy 17 helicopter visibility reduction below 1 SM NA.

MISSED APPROACH: Climb to 2600 direct HOWIF and hold.

AWOS-3PT <b>119.975</b>	KANSAS CITY CENTER <b>125.55 327.0</b>	UNICOM <b>123.0 (CTAF) 0</b>
----------------------------	---	---------------------------------



CATEGORY	A	B	C	D
LNAV MDA	1420-1	505 (600-1)	1420-1½ 505 (600-1½)	NA
CIRCLING	1420-1 505 (600-1)	1460-1 545 (600-1)	1520-1¾ 605 (700-1¾)	NA

NC-3, 03 OCT 2024 to 31 OCT 2024

NC-3, 03 OCT 2024 to 31 OCT 2024