

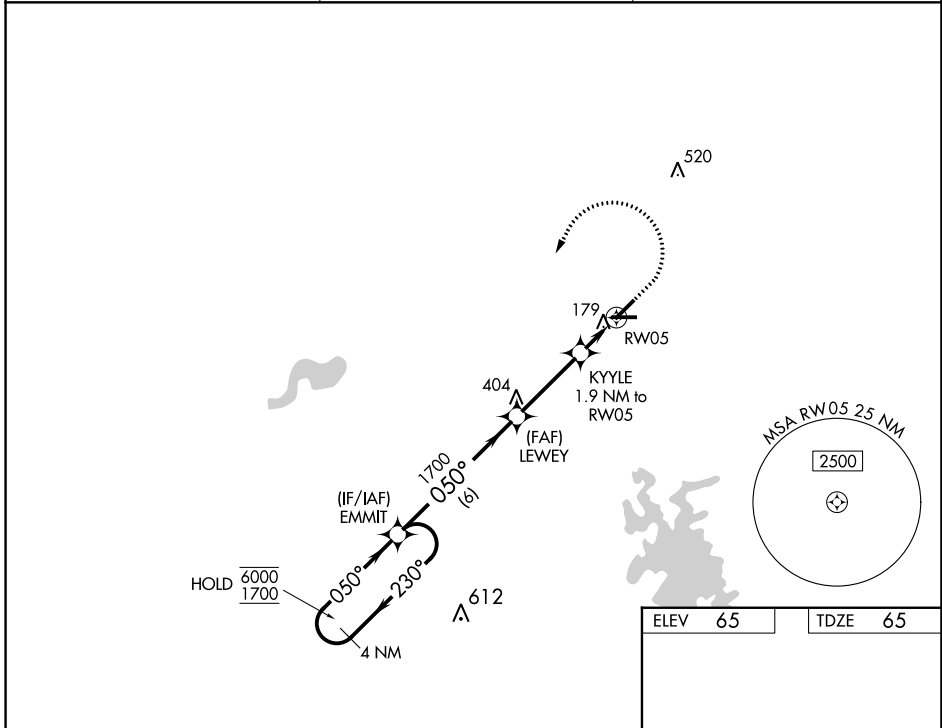
WAAS CH <b>72946</b> <b>W05A</b>	APP CRS <b>050°</b>	Rwy Idg <b>5000</b> TDZE <b>65</b> Apt Elev <b>65</b>
--	------------------------	---

# RNAV (GPS) RWY 5

MARION COUNTY (X35)

RNP APCH - GPS.	<p><b>▽</b> Rwy 5 helicopter visibility reduction below 1 SM NA. Use Ocala altimeter setting; when not received, use Leesburg altimeter setting and increase all MDAs 60 feet and LNAV and LP visibility Cat C/D ¼ SM and Circling visibility Cat D ¼ SM. Straight-in Rwy 5 NA at night, Circling Rwy 5, 10, 28 NA at night.</p>	<p>MISSED APPROACH: Climb to 600 then climbing left turn to 1700 direct EMMIT and hold.</p>
-----------------	--	---

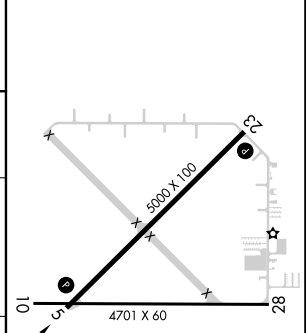
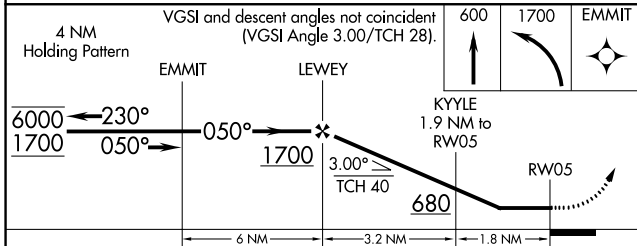
OCF AWOS-3PT <b>128.125</b>	JACKSONVILLE APP CON <b>118.6 251.15</b>	UNICOM <b>122.8 (CTAF) 0</b>
--------------------------------	---	---------------------------------



SE-3, 05 SEP 2024 to 03 OCT 2024

SE-3, 05 SEP 2024 to 03 OCT 2024

ELEV 65	TDZE 65
---------	---------



CATEGORY	A	B	C	D
LP MDA	500-1	435 (500-1)	500-1¼	435 (500-1¼)
LNAV MDA	540-1	475 (500-1)	540-1⅜	475 (500-1⅜)
CIRCLING	540-1	475 (500-1)	580-1½ 515 (600-1½)	760-2¼ 695 (700-2¼)

MIRL Rwy 5-23 and 10-28 0