

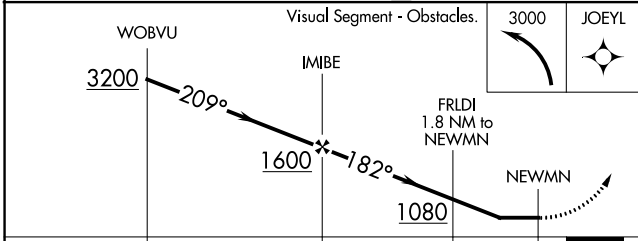
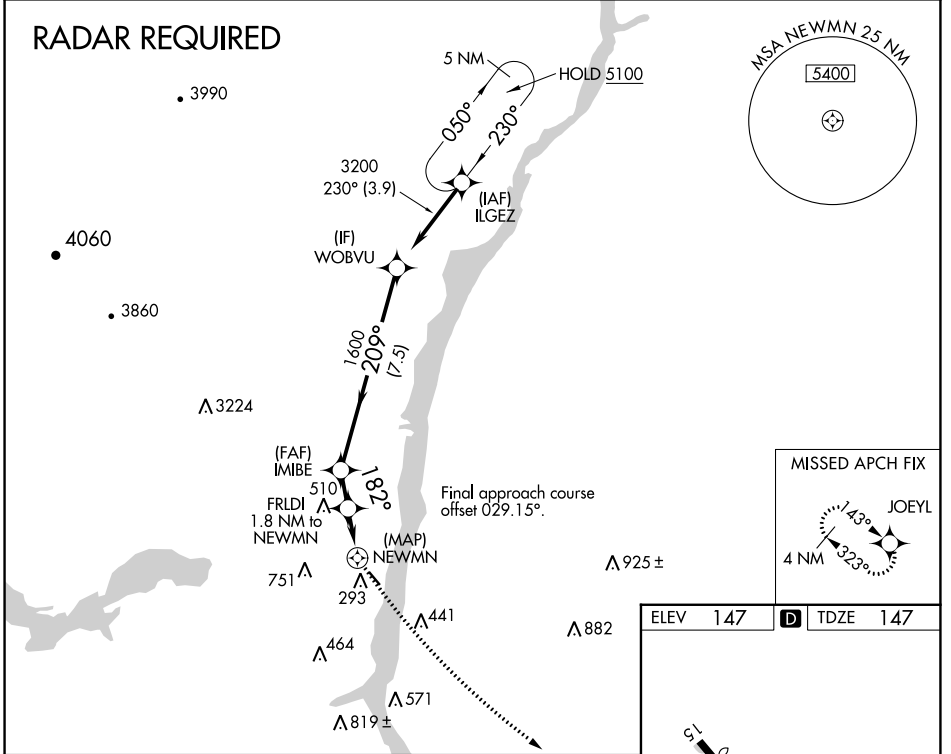
WAAS CH 40136 W15A	APP CRS 182°	Rwy Idg 2775 TDZE 147 Apt Elev 147
--	------------------------	---

RNAV (GPS) RWY 15

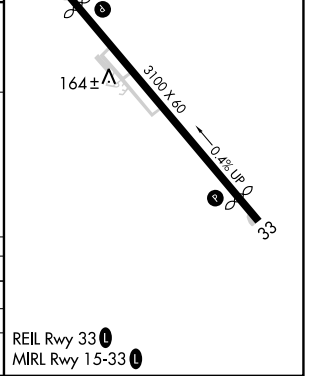
KINGSTON-ULSTER (20N)

RNP APCH - GPS.	<p>⚠ Rwy 15 helicopter visibility reduction below 1 SM NA. When Circling to Rwy 33 at night, operational VGSI required, remain on or above VGSI glidepath until threshold. Use Hudson altimeter setting. When not received, use Newburgh altimeter setting and increase all MDA 60 feet. Straight-in Rwy 15 NA at night.</p>	<p>MISSED APPROACH: Climbing left turn to 3000 direct JOEYL and hold.</p>
-----------------	---	--

NEW YORK APP CON 132.75 363.1	UNICOM 122.8 (CTAF)	123.3 0
---	-------------------------------	-----------------------



CATEGORY	A	B	C	D
LP MDA	720-1	573 (600-1)		NA
LNAV MDA	800-1	653 (700-1)		NA
C CIRCLING	800-1 653 (700-1)	960-1¼ 813 (900-1¼)		NA



NE-2, 31 OCT 2024 to 28 NOV 2024

NE-2, 31 OCT 2024 to 28 NOV 2024