

| | | |
|--|------------------------|---|
| WAAS CH 82414 W06A | APP CRS 058° | Rwy ldg 4500 TDZE 933 Apt Elev 933 |
|--|------------------------|---|

RNAV (GPS) RWY 6

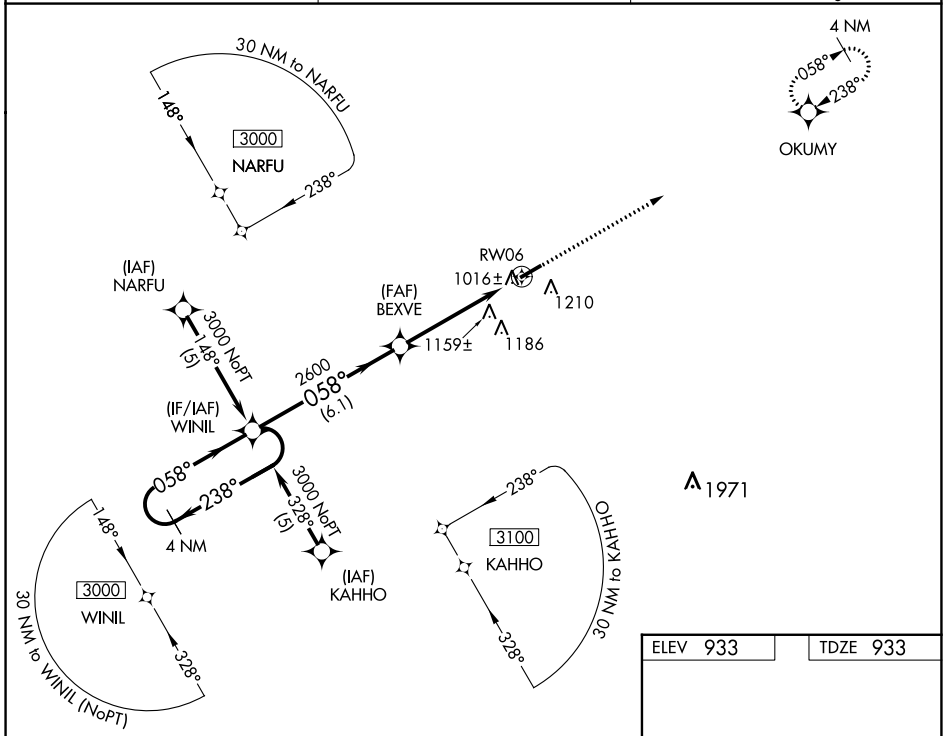
SULLIVAN RGNL (UUV)

▼ Circling to Rwy 24 NA at night. For uncompensated Baro-VNAV systems, LNAV/VNAV NA below -16°C (4°F) or above 54°C (130°F). DME/DME RNP-0.3 NA. Visibility reduction by helicopters NA.

▲ NA Baro-VNAV and VDP NA when using Rolla Nil altimeter setting. When local altimeter setting not received, use Rolla Nil altimeter setting and increase all DA 98 feet and all MDA 100 feet, increase LPV Cat A and B visibility ½ mile and LNAV/VNAV Cat A and B visibility ¼ mile.

MISSED APPROACH: Climb to 3000 direct OKUMY and hold.

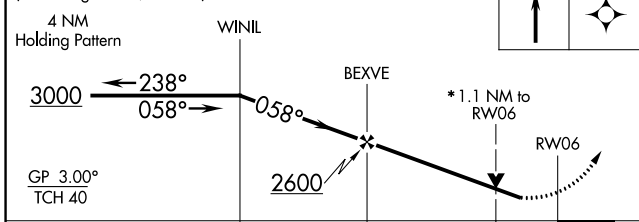
| | | |
|----------------------------|---|---------------------------------|
| AWOS-3PT 119.375 | KANSAS CITY CENTER 128.35 284.675 | UNICOM 122.7 (CTAF) 0 |
|----------------------------|---|---------------------------------|



NC-3, 03 OCT 2024 to 31 OCT 2024

NC-3, 03 OCT 2024 to 31 OCT 2024

VGSI and RNAV glidepath not coincident (VGSI Angle 4.00/TCH 57). *LNAV only.



| | |
|----------|----------|
| ELEV 933 | TDZE 933 |
|----------|----------|

| CATEGORY | A | B | C | D |
|--------------|--------|-------------|---|----|
| LPV DA | 1236-1 | 303 (400-1) | | NA |
| LNAV/VNAV DA | 1488-2 | 555 (600-2) | | NA |
| LNAV MDA | 1420-1 | 487 (500-1) | | NA |
| CIRCLING | 1520-1 | 587 (600-1) | | NA |

