

WAAS CH 72714 W24A	APP CRS 238°	Rwy ldg 4500 TDZE 928 Apt Elev 933
----------------------------------------	------------------------	---------------------------------------------------------------

RNAV (GPS) RWY 24

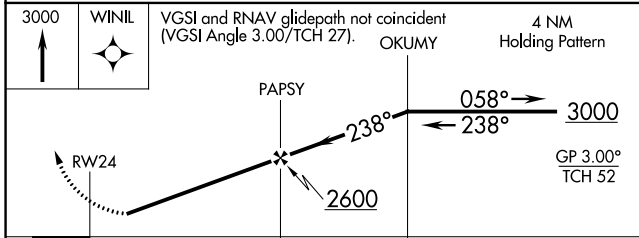
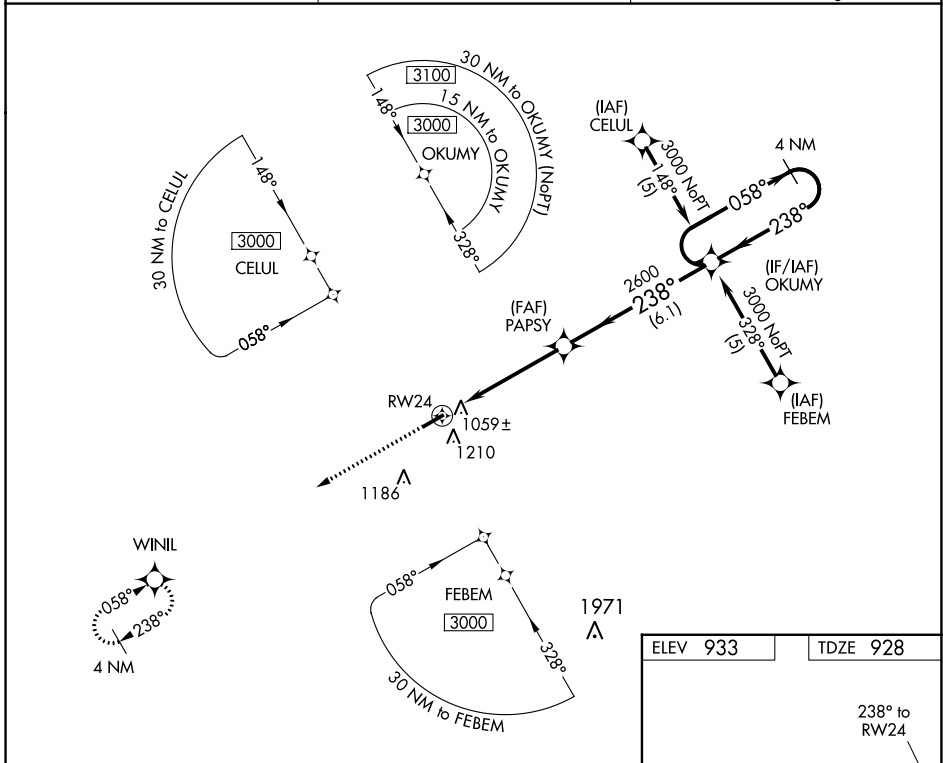
SULLIVAN RGNL (UUU)

Straight-in minimums NA at night. Circling to Rwy 24 NA at night. Baro-VNAV NA when using Rolla Nil altimeter setting. For uncompensated Baro-VNAV systems, LNAV/VNAV NA below -16°C (4°F) or above 54°C (130°F). DME/DME RNP-0.3 NA. Visibility reduction by helicopters NA.

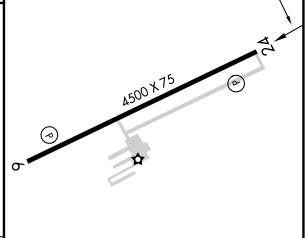
NA When local altimeter setting not received, use Rolla Nil altimeter setting and increase all DA 98 feet and all MDA 100 feet, increase LPV and LNAV/VNAV Cat A and B visibility 1/4 mile.

MISSED APPROACH: Climb to 3000 direct WINIL and hold.

AWOS-3PT 119.375	KANSAS CITY CENTER 128.35 284.675	UNICOM 122.7 (CTAF) 0
----------------------------	---------------------------------------------	---------------------------------



ELEV 933	TDZE 928
----------	----------



CATEGORY	A	B	C	D
LPV DA	1178-1	250 (300-1)		NA
LNAV/VNAV DA	1392-1¾	464 (500-1¾)		NA
LNAV MDA	1460-1	532 (600-1)		NA
CIRCLING	1520-1	587 (600-1)		NA

MIRL Rwy 6-24 0

NC-3, 03 OCT 2024 to 31 OCT 2024

NC-3, 03 OCT 2024 to 31 OCT 2024