

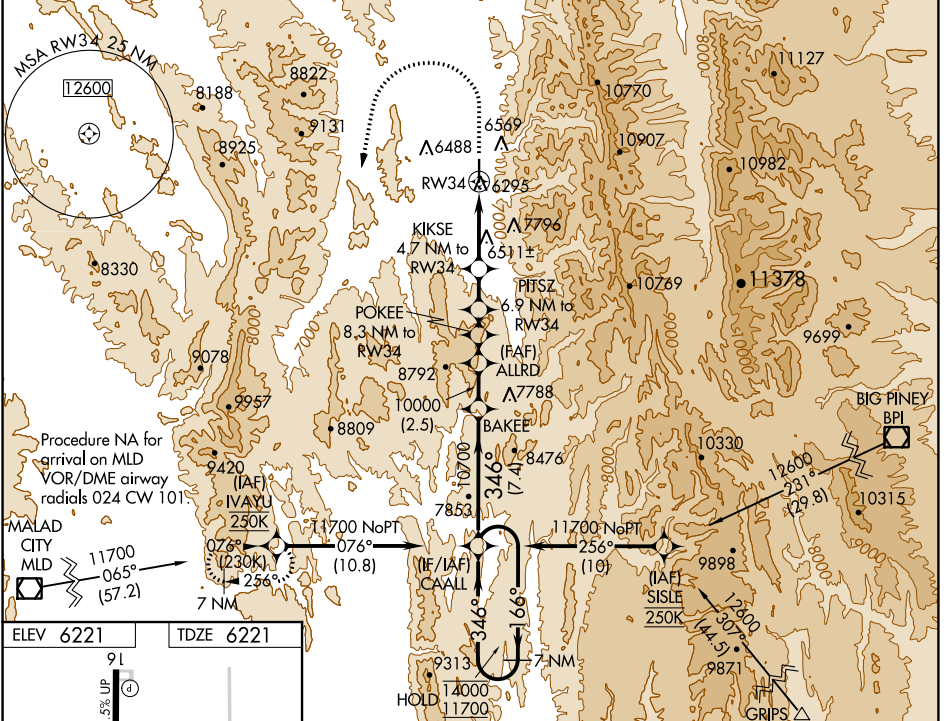
APP CRS	Rwy Idg	7025
346°	TDZE	6221
	Apt Elev	6221

RNAV (GPS) RWY 34

AFTON MUNI (AFO)

RNP APCH - GPS.	MISSED APPROACH: (Do not exceed 200K until IVAYU) Climb to 8080 then climbing left turn to 11700 direct IVAYU and hold.
<p>▼ Circling NA east of Rwy 16-34. Procedure NA at night.</p> <p>▲ NA Rwy 34 helicopter visibility reduction below 1 SM NA.</p> <p>❄ -18°C When Afton altimeter setting not received, procedure NA.</p>	*Missed approach requires minimum climb of 364 feet per NM to 8900.

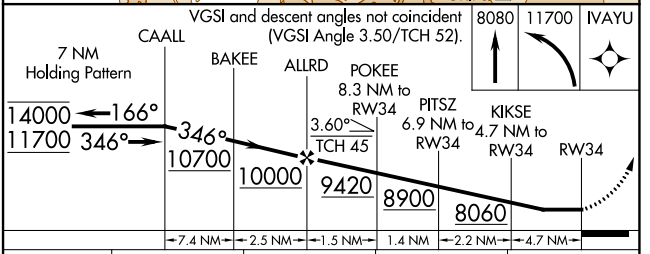
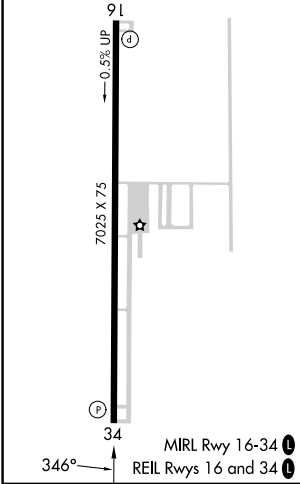
AWOS-3P 119.025	SALT LAKE CENTER 128.35 239.25	UNICOM 122.8 (CTAF)
---------------------------	--	-------------------------------



NW-1, 03 OCT 2024 to 31 OCT 2024

NW-1, 03 OCT 2024 to 31 OCT 2024

ELEV 6221	TDZE 6221
-----------	-----------



CATEGORY	A	B	C	D
RNAV MDA*	7520-1¼ 1299 (1300-1¼)	7520-1½ 1299 (1300-1½)	7520-3 1299 (1300-3)	NA
RNAV MDA	7800-1¼ 1579 (1600-1¼)	7800-1½ 1579 (1600-1½)	7800-3 1579 (1600-3)	NA
CIRCLING	7800-1¼ 1579 (1600-1¼)	7800-1½ 1579 (1600-1½)	7800-3 1579 (1600-3)	NA