

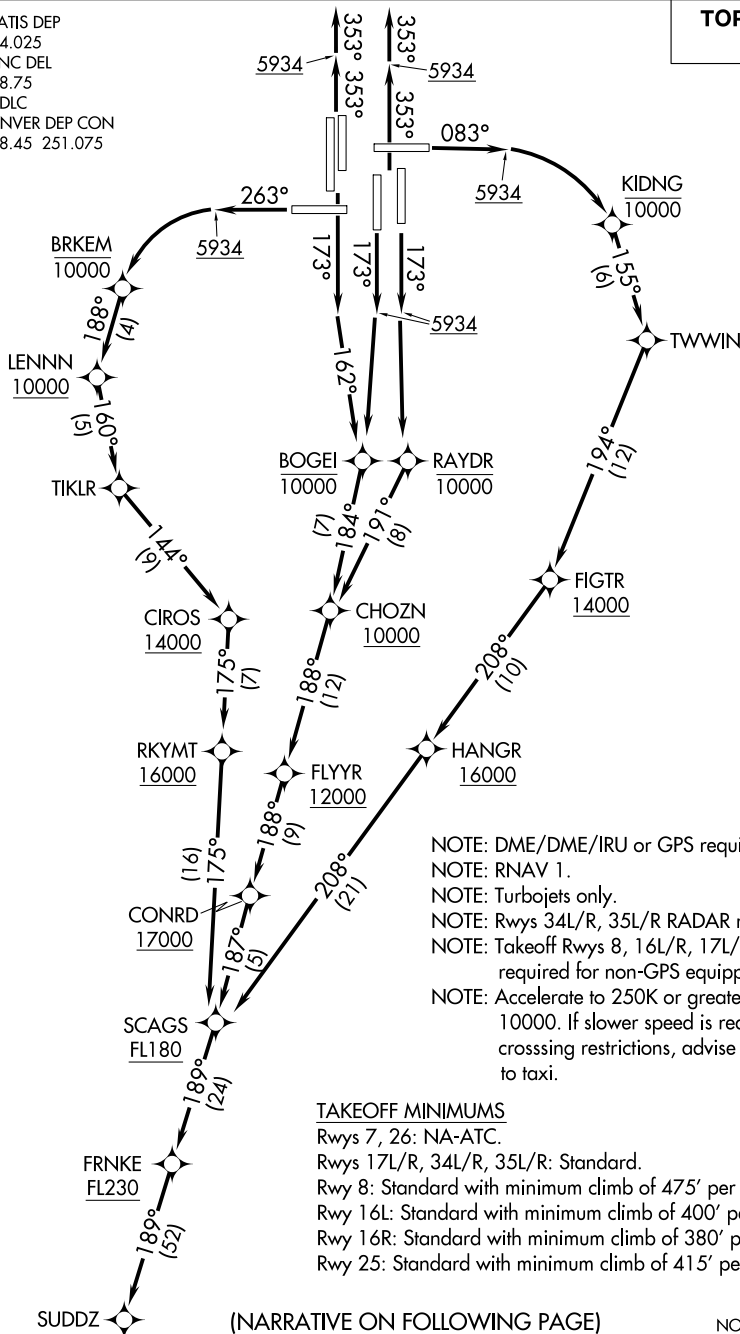
SUDDZ ONE DEPARTURE (RNAV)

AL-9077 (FAA)

DENVER INTL (DEN)
DENVER, COLORADO

**TOP ALTITUDE:
FL230**

D-ATIS DEP
134.025
CLNC DEL
118.75
CPDLC
DENVER DEP CON
128.45 251.075



NOTE: DME/DME/IRU or GPS required.
 NOTE: RNAV 1.
 NOTE: Turbojets only.
 NOTE: Rws 34L/R, 35L/R RADAR required.
 NOTE: Takeoff Rws 8, 16L/R, 17L/R, 25, RADAR required for non-GPS equipped aircraft.
 NOTE: Accelerate to 250K or greater upon reaching 10000. If slower speed is required to meet crossing restrictions, advise CLNC DEL prior to taxi.

TAKEOFF MINIMUMS

Rws 7, 26: NA-ATC.
 Rws 17L/R, 34L/R, 35L/R: Standard.
 Rwy 8: Standard with minimum climb of 475' per NM to 5934.
 Rwy 16L: Standard with minimum climb of 400' per NM to 5934.
 Rwy 16R: Standard with minimum climb of 380' per NM to 5934.
 Rwy 25: Standard with minimum climb of 415' per NM to 5934.

SUDDZ (NARRATIVE ON FOLLOWING PAGE)

NOTE: Chart not to scale.

SUDDZ ONE DEPARTURE (RNAV)

SW-1, 11 JUL 2024 to 08 AUG 2024

SW-1, 11 JUL 2024 to 08 AUG 2024