

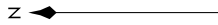
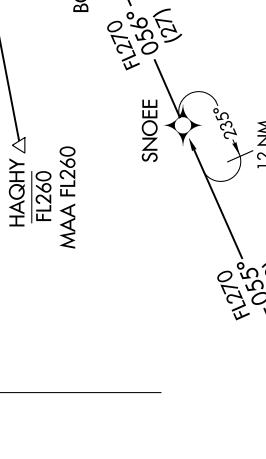
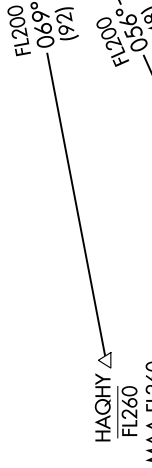
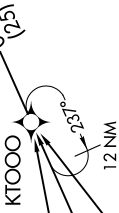
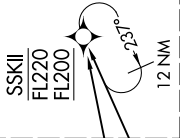
SSKII THREE ARRIVAL (RNAV) Transition Routes

SW-1, 11 JUL 2024 to 08 AUG 2024

DENVER APP CON
120.35 379.3
D-ATIS ARR
125.6 379.9
DENVER TOWER
128.75 273.55 (Rwy 7-25)
132.35 239.275 (Rwys 8-26, 17L-35R)
124.3 322.45 (Rwy 17R-35L)
135.3 351.95 (Rwys 16L-34R, 16R-34I)

RNAV 1 - DME/DME/IRU or GPS
RADAR required for non-GPS equipped aircraft

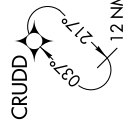
See following page
for arrival routes



NOTE: Turbojet aircraft only.
NOTE: Turbojet aircraft descend via MACH number until intercepting 280K. Maintain 280K until slowed by STAR.
NOTE: Denver Center will issue "descend via" clearance and landing direction.
NOTE: Expect runway assignment on initial contact with Denver TRACON.
NOTE: BOWLL enroute transition: do not file-to be assigned by ATC.

NOTE: Landing north select Rwy 34R transition.
NOTE: Landing south select Rwy 16R transition.
NOTE: Landing east select Rwy 7 transition.
NOTE: Landing west select Rwy 26 transition.

BOWLL TRANSITION (BOWLL.SSKII3)
BUMMP TRANSITION (BUMMP.SSKII3)
HAGHY TRANSITION (HAGHY.SSKII3)
JNET TRANSITION (JNET.SSKII3)
WUNZE TRANSITION (WUNZE.SSKII3)



(CONTINUED ON FOLLOWING PAGE)

NOTE: Chart not to scale.

SW-1, 11 JUL 2024 to 08 AUG 2024

SSKII THREE ARRIVAL (RNAV) Transition Routes