

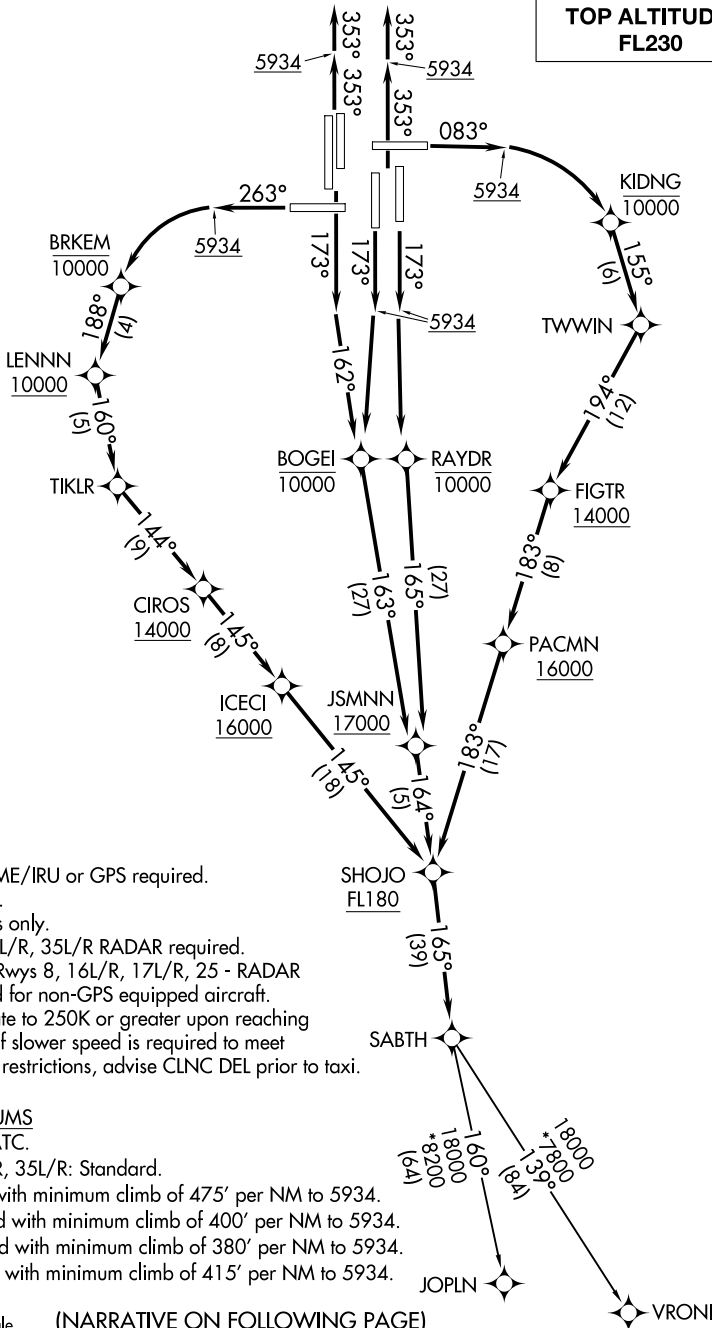
SABTH TWO DEPARTURE (RNAV)

AL-9077 (FAA)

DENVER INTL (DEN)
DENVER, COLORADO

**TOP ALTITUDE:
FL230**

D-ATIS DEP
134.025
CLNC DEL
118.75
CPDLC
DENVER DEP CON
128.45 251.075



- NOTE: DME/DME/IRU or GPS required.
- NOTE: RNAV 1.
- NOTE: Turbojets only.
- NOTE: Rwy 34L/R, 35L/R RADAR required.
- NOTE: Takeoff Rwy 8, 16L/R, 17L/R, 25 - RADAR required for non-GPS equipped aircraft.
- NOTE: Accelerate to 250K or greater upon reaching 10000. If slower speed is required to meet crossing restrictions, advise CLNC DEL prior to taxi.

TAKEOFF MINIMUMS

- Rwys 7, 26: NA-ATC.
- Rwy 17L/R, 34L/R, 35L/R: Standard.
- Rwy 8: Standard with minimum climb of 475' per NM to 5934.
- Rwy 16L: Standard with minimum climb of 400' per NM to 5934.
- Rwy 16R: Standard with minimum climb of 380' per NM to 5934.
- Rwy 25: Standard with minimum climb of 415' per NM to 5934.

NOTE: Chart not to scale.

(NARRATIVE ON FOLLOWING PAGE)

SABTH TWO DEPARTURE (RNAV)