

WAAS CH <b>93529</b> <b>W17B</b>	APP CRS <b>173°</b>	Rwy Idg <b>12000</b> TDZE <b>5392</b> Apt Elev <b>5434</b>
--	------------------------	--

# RNAV (GPS) Y RWY 17R

DENVER INTL (DEN)

**▼** For uncompensated Baro-VNAV systems, LNAV/VNAV NA below -25°C (-13°F) or above 46°C (116°F). Simultaneous approach authorized with Rwy 16L/16R and 17L. DME/DME RNP-0.3 NA. For inoperative MALS/R, increase LNAV/VNAV all Cats visibility to 1½ mile, and LNAV Cat C/D to 1¼ mile. LNAV procedure NA during simultaneous operations. Use of FD or AP providing RNAV track guidance required during simultaneous operations.

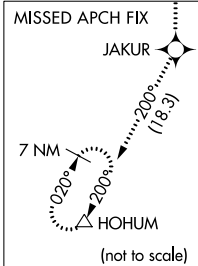
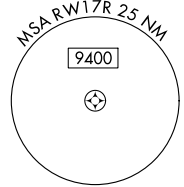
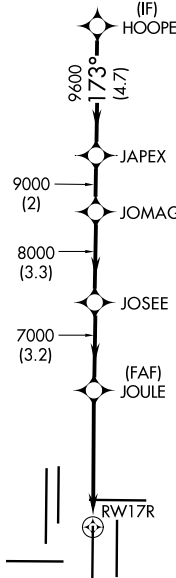


**MISSED APPROACH:**  
Climb to 10000 direct JAKUR and on track 200° to HOHUM and hold.

D-ATIS ARR <b>125.6 379.9</b> DEP <b>134.025</b>	DENVER APP CON <b>119.3 307.3</b> (NORTH) <b>120.35 379.3</b> (SOUTH)	DENVER TOWER <b>124.3 322.45</b>	GND CON <b>121.85 377.1</b>	CLNC DEL <b>118.75</b>	CPDLC
--	---	-------------------------------------	--------------------------------	---------------------------	-------

## RADAR REQUIRED

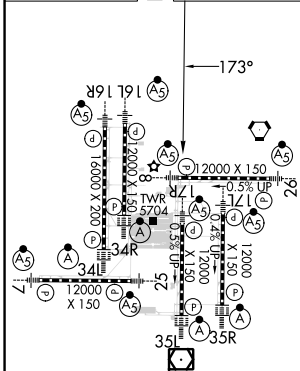
△ 6260



SW-1, 11 JUL 2024 to 08 AUG 2024

SW-1, 11 JUL 2024 to 08 AUG 2024

ELEV <b>5434</b>	<b>D</b>	TDZE <b>5392</b>
------------------	----------	------------------



10000	JAKUR	tr 200°	HOHUM	VGSI and RNAV glidepath not coincident (VGSI Angle 3.00/TCH 69).				HOPE
*LNAV only		*1.6 NM to RWY 17R		JOULE	JOSEE	JOMAG	JAPEX	HOPE
RWY 17R		7000	8000	9000	9600	11000	GP 3.00° TCH 60	
1.6		3.3 NM	3.2 NM	3.3 NM	2 NM	4.7 NM		
CATEGORY	A		B		C		D	
LPV DA	5592/18		200 (200-½)					
LNAV/VNAV DA	5857/60		465 (500-1¼)					
LNAV MDA	5940/24		548 (600-½)		5940-1¼		548 (600-1¼)	

HIRL all Rwys  
TDZ/CL Rwys 7, 16L, 16R, 17R,  
26, 34L, 34R, 35L, 35R