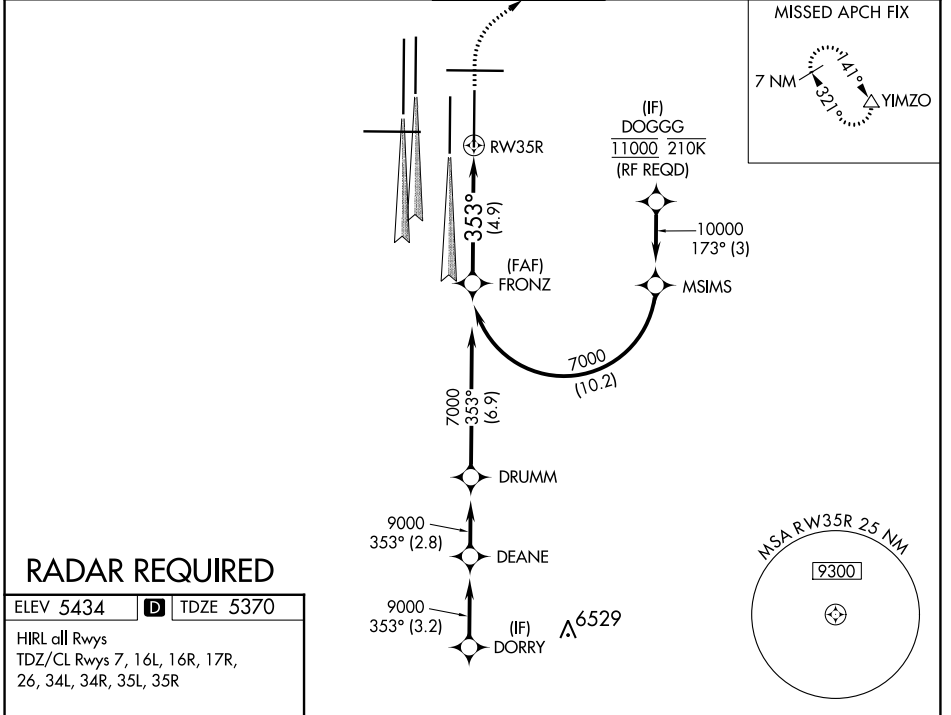


APP CRS 353°	Rwy Idg 12000
	TDZE 5370
	Apt Elev 5434

RNAV (RNP) Z RWY 35R

DENVER INTL (DEN)

<p>▽ For uncompensated Baro-VNAV systems, procedure NA below -25°C (-13°F) or above 45°C (114°F). GPS required. For inoperative ALSF, increase RNP 0.10 all Cats visibility to RVR 4500 and RNP 0.30 all Cats visibility to RVR 5000. Simultaneous approach authorized. Use of FD or AP providing RNAV track guidance required during simultaneous operations.</p>		<p>ALSF-2</p>	<p>MISSED APPROACH: Climb to 5900, then climbing right turn to 8000 direct YIMZO and hold.</p>		
D-ATIS ARR 125.6 379.9 DEP 134.025	DENVER APP CON 119.3 307.3 120.35 379.3 (NORTH) (SOUTH)	DENVER TOWER 132.35 239.275	GND CON 121.85 377.1	CLNC DEL 118.75	CPDLC



<p>VGSI and RNAV glidepath not coincident (VGSI Angle 3.00/TCH 66).</p>		5900	8000	YIMZO															
<p>7000</p> <p>GP 3.00° TCH 59</p> <p>See planview for multiple IF locations.</p> <p>4.9 NM</p>		↑	↷	△															
FRONZ	7000																		
		RW35R																	
7000	353°																		
<table border="1"> <thead> <tr> <th>CATEGORY</th> <th>A</th> <th>B</th> <th>C</th> <th>D</th> </tr> </thead> <tbody> <tr> <td>RNP 0.10 DA</td> <td colspan="4">5631/24 261 (200-1/2)</td> </tr> <tr> <td>RNP 0.30 DA</td> <td colspan="4">5702/32 332 (300-5/8)</td> </tr> </tbody> </table>					CATEGORY	A	B	C	D	RNP 0.10 DA	5631/24 261 (200-1/2)				RNP 0.30 DA	5702/32 332 (300-5/8)			
CATEGORY	A	B	C	D															
RNP 0.10 DA	5631/24 261 (200-1/2)																		
RNP 0.30 DA	5702/32 332 (300-5/8)																		

AUTHORIZATION REQUIRED