

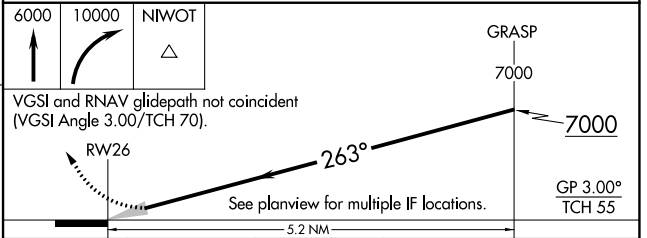
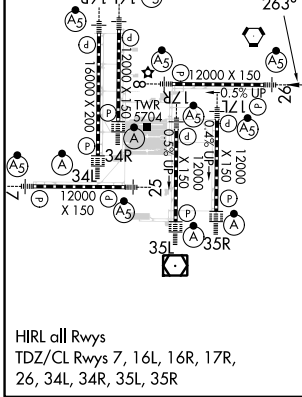
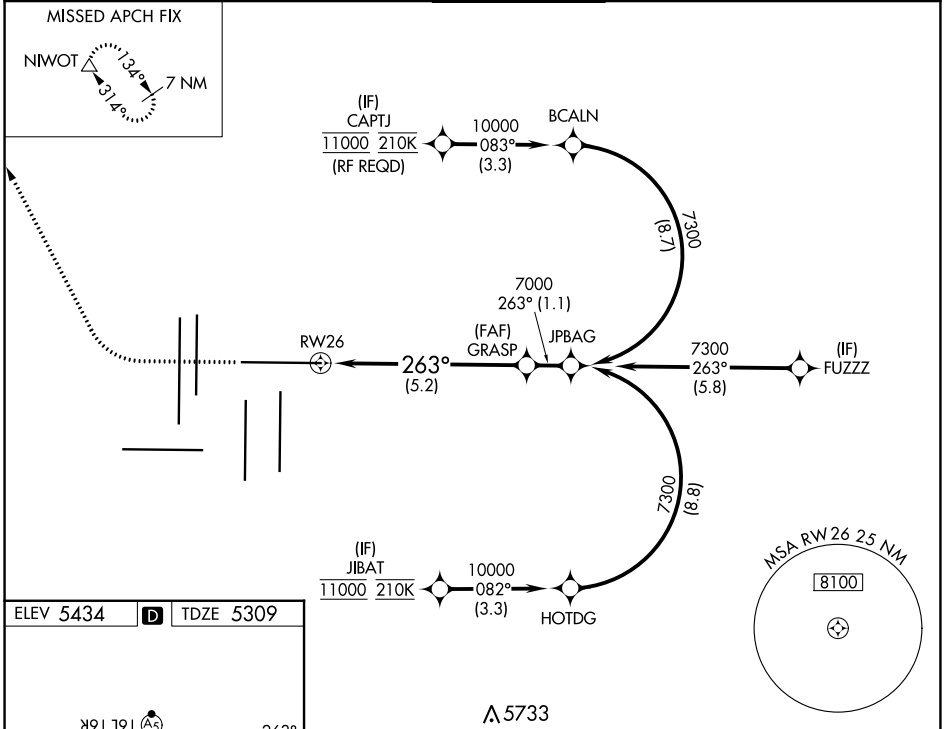
APP CRS <b>263°</b>	Rwy Idg <b>12000</b>
	TDZE <b>5309</b>
	Apt Elev <b>5434</b>

# RNAV (RNP) Z RWY 26

DENVER INTL (DEN)

RNP AR APCH.	MALSR	MISSED APPROACH: Climb to 6000 then climbing right turn to 10000 direct NIWOT and hold.
<p>Simultaneous approach authorized. For uncompensated Baro-VNAV systems, procedure NA below -23°C or above 54°C. For inop ALS, increase RNP 0.15 all Cats visibility to RVR 4000, and increase RNP 0.30 all Cats visibility to RVR 4500.</p>		

D-ATIS	DENVER APP CON	DENVER TOWER	GND CON	CLNC DEL	CPDLC
ARR <b>125.6 379.9</b> DEP <b>134.025</b>	<b>119.3 307.3</b> (NORTH) <b>120.35 379.3</b> (SOUTH)	<b>132.35 239.275</b>	<b>121.85 377.1</b>	<b>118.75</b>	



CATEGORY	A	B	C	D
RNP 0.15 DA		5566/24	257 (200-½)	
RNP 0.30 DA		5611/24	302 (200-½)	

**AUTHORIZATION REQUIRED**

SW-1, 11 JUL 2024 to 08 AUG 2024

SW-1, 11 JUL 2024 to 08 AUG 2024