


LOC/DME I-FUI 108.9 Chan 26	APP CRS 083°	Rwy Idg TDZE Apt Elev	12000 5354 5434
--	------------------------	-----------------------------	--

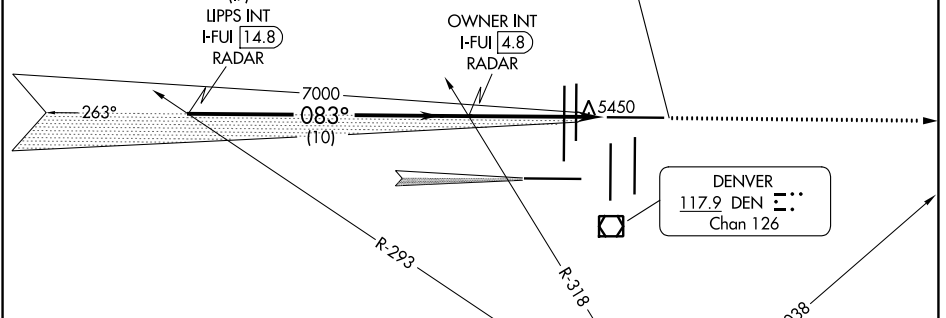
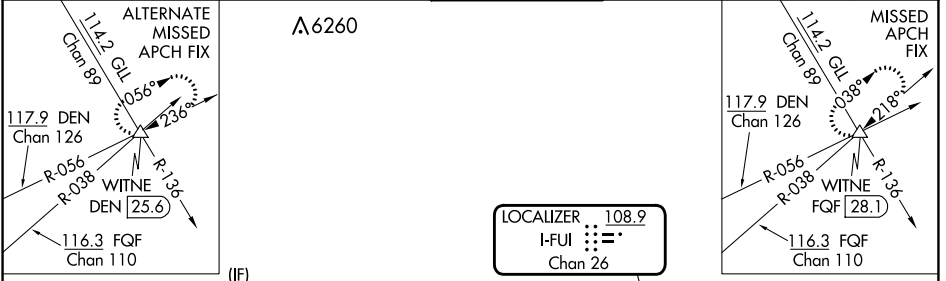
ILS or LOC RWY 8

DENVER INTL (DEN)

Simultaneous approach authorized with Rwy 7. For inoperative MALSR, increase S-LOC 8 Cat C/D visibility to RVR 5500. ** RVR 1800 authorized with use of FD or AP or HUD to DA.

MALSRR  MISSED APPROACH: Climb to 10000 on heading 083° and on FGF VORTAC R-038 to WITNE INT/FGF 28.1 DME and hold.

D-ATIS ARR 125.6 379.9 DEP 134.025	DENVER APP CON 119.3 307.3 (NORTH) 120.35 379.3 (SOUTH)	DENVER TOWER 132.35 239.275	GND CON 121.85 377.1	CLNC DEL 118.75	CPDLC
--	---	---------------------------------------	--------------------------------	---------------------------	-------

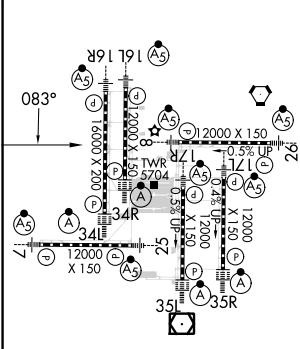


SW-1, 11 JUL 2024 to 08 AUG 2024

SW-1, 11 JUL 2024 to 08 AUG 2024

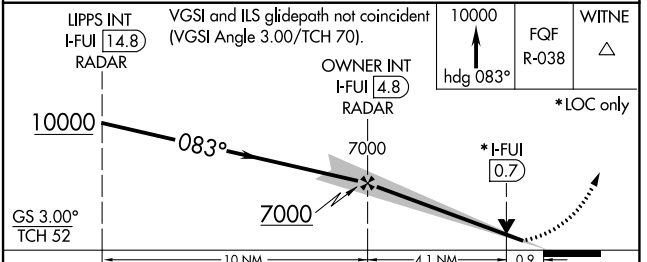
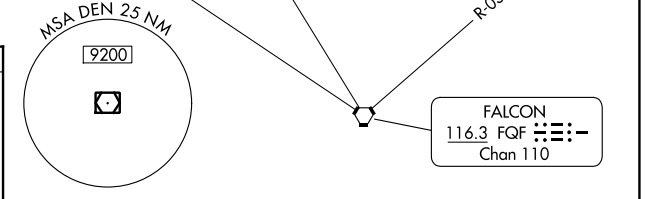
RADAR REQUIRED

ELEV 5434	D	TDZE 5354
-----------	----------	-----------



TDZ/CL Rwy 7, 16L, 16R, 17R, 26, 34L, 34R, 35L, 35R
HIRL all Rwy

FAF to MAP 5 NM					
Knots	60	90	120	150	180
Min:Sec	5:00	3:20	2:30	2:00	1:40



GS 3.00° TCH 52	10000	7000	0.9
CATEGORY	A	B	C
S-ILS 8**	5554/24 200 (200-½)		
S-LOC 8	5700/24 346 (300-½)	5700/30 346 (300-⅝)	