

LOC/DME I-DPP 110.15 Chan 38(Y)	APP CRS 353°	Rwy Idg 12000 TDZE 5370 Apt Elev 5434
---	------------------------	--

ILS or LOC RWY 35R

DENVER INTL (DEN)

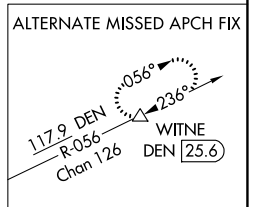
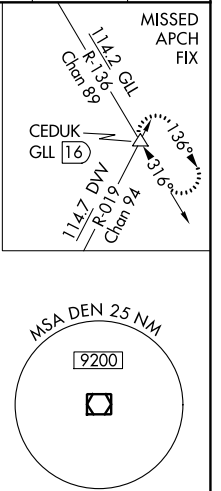
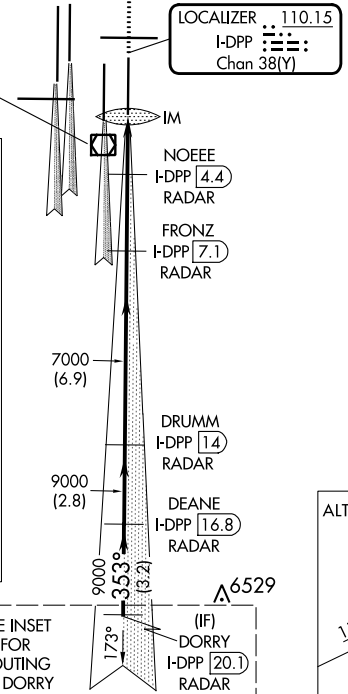
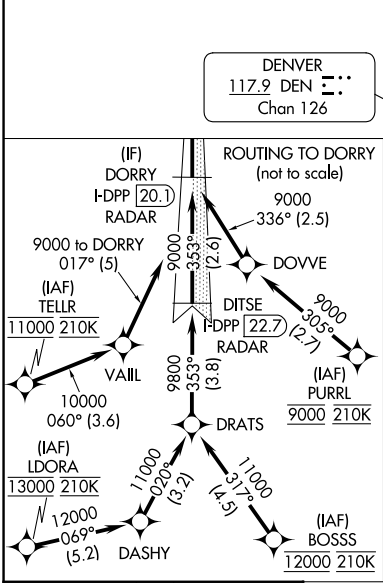
▼ S-LOC 35R DME or RADAR required.
Simultaneous approach authorized with Rwy 34L, Rwy 34R, and Rwy 35L.

ALSF-2
(A)

MISSED APPROACH: Climb to 5800 then climbing right turn to 10000 on heading 048° and on GLL VORTAC R-136 to CEDUK/GLL 16 DME and hold.

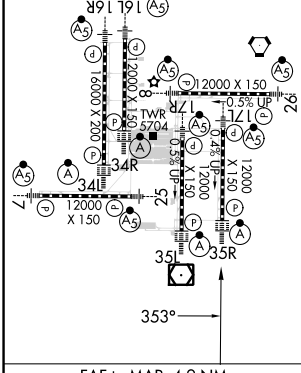
D-ATIS ARR 125.6 379.9 DEP 134.025	DENVER APP CON 119.3 307.3 120.35 379.3 (NORTH) (SOUTH)	DENVER TOWER 132.35 239.275	GND CON 121.85 377.1	CLNC DEL 118.75	CPDLC
--	--	---------------------------------------	--------------------------------	---------------------------	-------

RADAR or GPS REQUIRED



ELEV 5434	D	TDZE 5370
------------------	----------	------------------

HIRL all Rwy's
TDZ/CL Rwy's 7, 16L, 16R, 17R, 26, 34L, 34R, 35L, 35R



VGSi and ILS glidepath not coincident (VGSi Angle 3.00/TCH 66).		5800	10000	GLL	CEDUK
				R-136	△
		* LOC only			
DORRY I-DPP 20.1 RADAR	DEANE I-DPP 16.8 RADAR	DRUMM I-DPP 1.4 RADAR	FRONZ I-DPP 7.1 RADAR	NOEE I-DPP 4.4 RADAR	
9000	353°	9000	7000	I-DPP 3.1	I-DPP 2.2
GS 3.00° TCH 59		*6120			
-3.2 NM		-2.8 NM	-6.9 NM	-2.7 NM	1.3 NM
CATEGORY	A	B	C	D	
S-ILS 35R	5570/18 200 (200-½)				
S-LOC 35R	5740/24	370 (400-½)	5740/35	370 (400-⅝)	

SW-1, 11 JUL 2024 to 08 AUG 2024

SW-1, 11 JUL 2024 to 08 AUG 2024