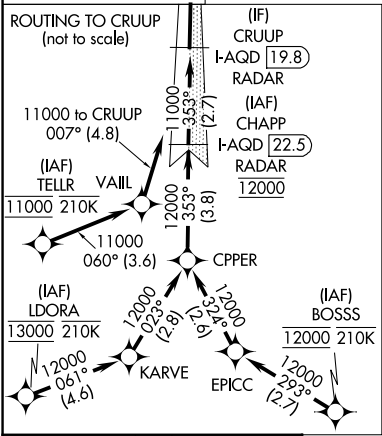
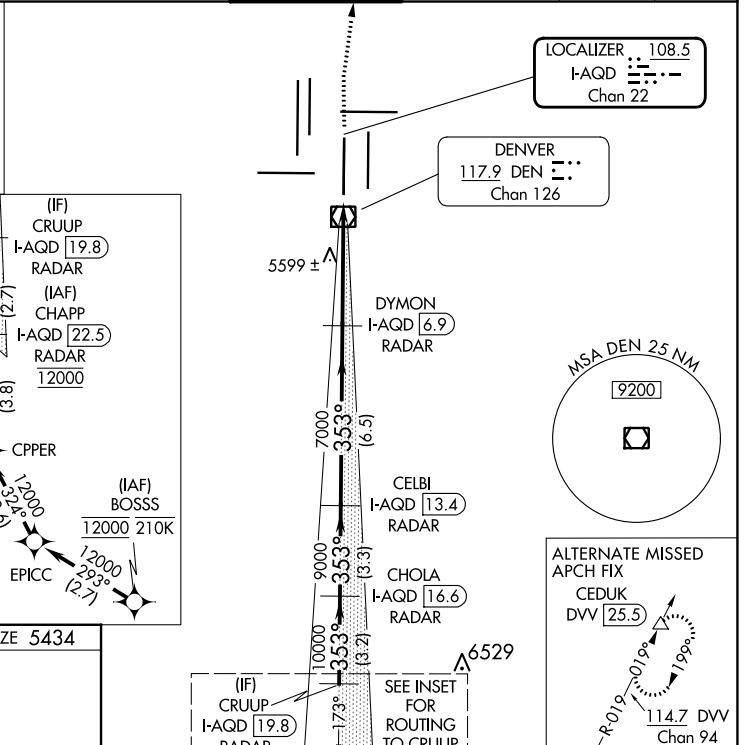
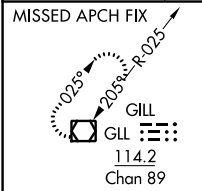


LOC/DME I-AQD 108.5 Chan 22	APP CRS 353°	Rwy Idg 12000 TDZE 5434 Apt Elev 5434
---	------------------------	--

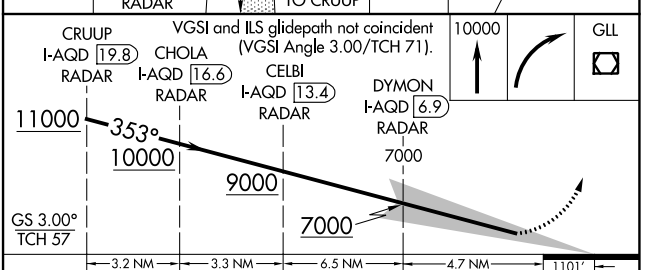
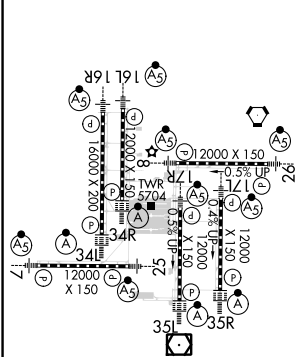
ILS RWY 35L (SA CAT I)

DENVER INTL (DEN)

RNAV 1-GPS or RADAR required for procedure entry.		ALS-F-2 	MISSED APPROACH: Climb to 10000 then right turn direct GLL VOR/DME and hold.		
▽ Simultaneous approach authorized. Requires specific OPSPEC, MSPEC, or LOA approval and use of HUD to DH.					
D-ATIS ARR 125.6 379.9 DEP 134.025	DENVER APP CON 119.3 307.3 (NORTH) 120.35 379.3 (SOUTH)	DENVER TOWER 124.3 322.45	GND CON 121.85 377.1	CLNC DEL 118.75	CPDLC



ELEV 5434	D	TDZE 5434
-----------	----------	-----------



CATEGORY	A	B	C	D
S-ILS 35L	RA 165/14 150 DA 5584			
SA CATEGORY I ILS - SPECIAL AIRCREW & AIRCRAFT CERTIFICATION REQUIRED				

SW-1, 11 JUL 2024 to 08 AUG 2024

SW-1, 11 JUL 2024 to 08 AUG 2024