

(FLATI.FLATI4) 24137

AL-9077 (FAA)

DENVER INTL (DEN)
DENVER, COLORADO

FLATI FOUR ARRIVAL (RNAV) Arrival Routes

RNAV 1 - DME/DME/IRU or GPS.

RADAR required.

DENVER APP CON

119.3 307.3

D-ATIS ARR

125.6 379.9

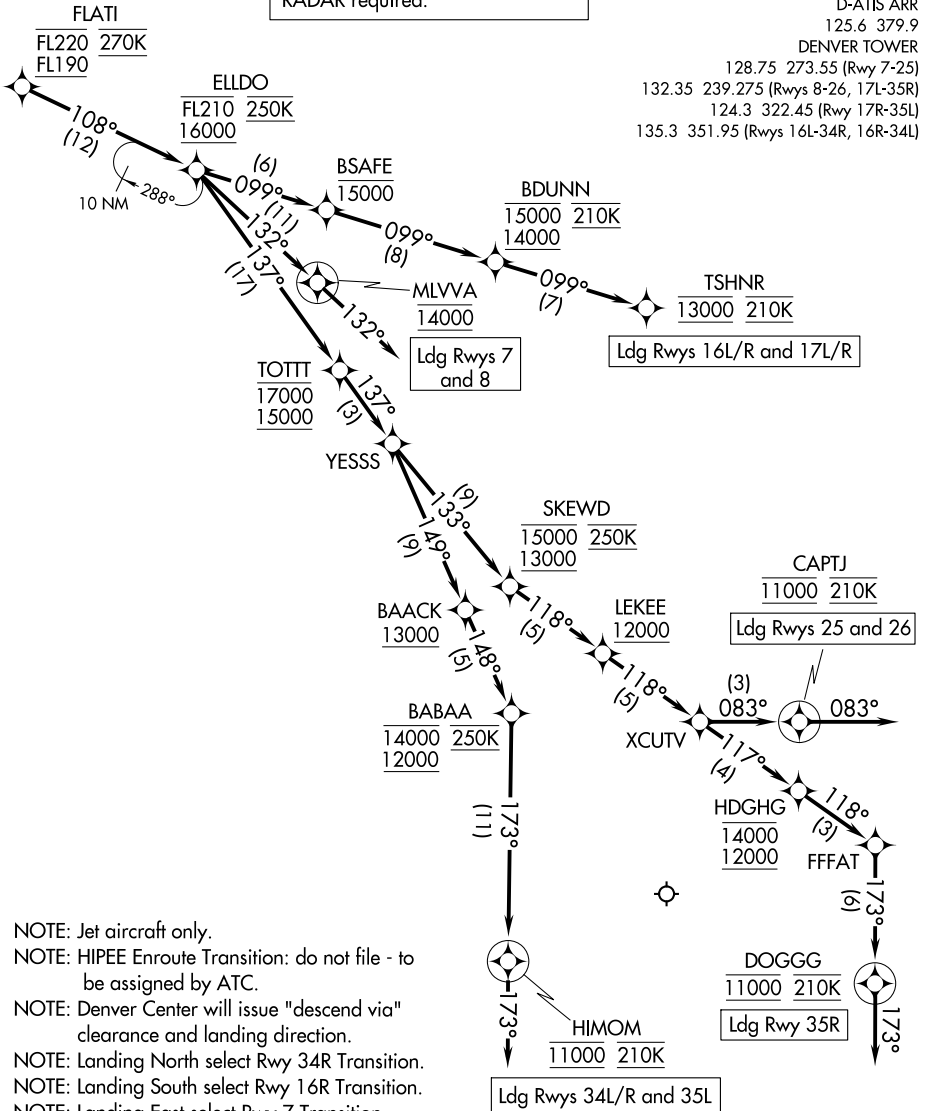
DENVER TOWER

128.75 273.55 (Rwys 7-25)

132.35 239.275 (Rwys 8-26, 17L-35R)

124.3 322.45 (Rwy 17R-35L)

135.3 351.95 (Rwys 16L-34R, 16R-34L)



SW-1, 11 JUL 2024 to 08 AUG 2024

SW-1, 11 JUL 2024 to 08 AUG 2024

- NOTE: Jet aircraft only.
- NOTE: HIPEE Enroute Transition: do not file - to be assigned by ATC.
- NOTE: Denver Center will issue "descend via" clearance and landing direction.
- NOTE: Landing North select Rwy 34R Transition.
- NOTE: Landing South select Rwy 16R Transition.
- NOTE: Landing East select Rwy 7 Transition.
- NOTE: Landing West select Rwy 26 Transition.
- NOTE: Expect runway assignment on initial contact with Denver TRACON.

(CONTINUED ON FOLLOWING PAGE)

NOTE: Chart not to scale.

FLATI FOUR ARRIVAL (RNAV) Arrival Routes

(FLATI.FLATI4) 16MAY24

DENVER, COLORADO
DENVER INTL (DEN)