

# EMMYS EIGHT DEPARTURE (RNAV)

AL-9077 (FAA)

DENVER INTL (DEN)

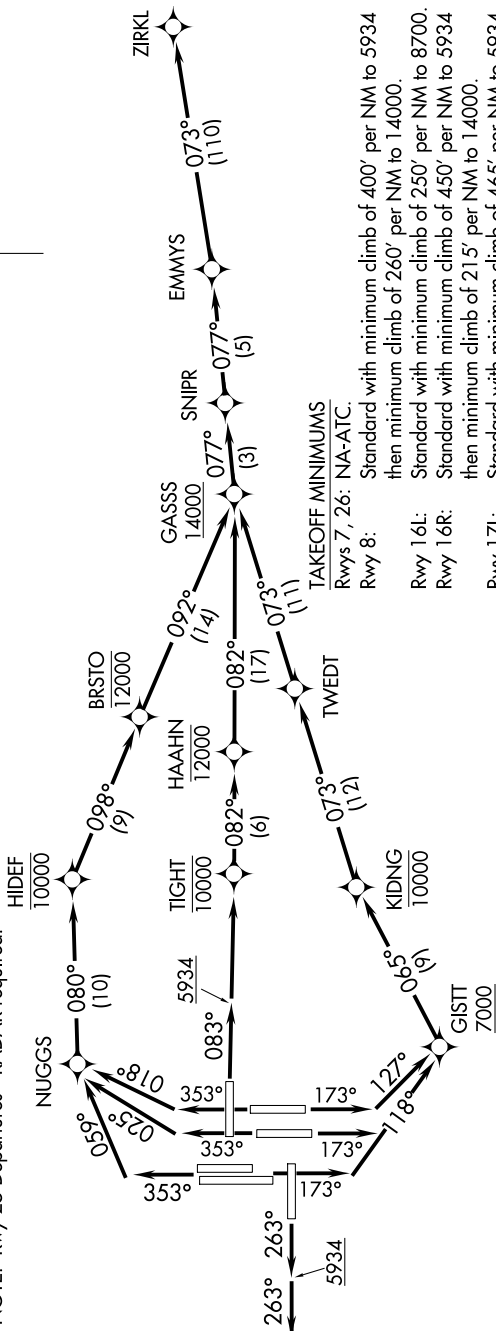
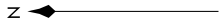
DENVER, COLORADO

SW-1, 11 JUL 2024 to 08 AUG 2024

**TOP ALTITUDE:  
FL230**

- NOTE: DME/DME/IRU or GPS required.
- NOTE: RNAV 1.
- NOTE: Turboprops only.
- NOTE: Takeoff Rwy 16L/R, 17L/R, 34L/R, 35L/R - RADAR required for non-GPS equipped aircraft.
- NOTE: Accelerate to 250K or greater upon reaching 10000. If slower speed is required to meet crossing restrictions advise CLNC DEL prior to taxi.
- NOTE: Rwy 25 Departures - RADAR required.

D-AIIS DEP  
134.025  
CLNC DEL  
118.75  
CPDLC  
DENVER DEP CON  
128.25 371.95



**TAKEOFF MINIMUMS**

- Rwys 7, 26: NA-ATC. Standard with minimum climb of 400' per NM to 5934 then minimum climb of 260' per NM to 14000.
- Rwy 8: Standard with minimum climb of 250' per NM to 8700.
- Rwy 16L: Standard with minimum climb of 450' per NM to 5934 then minimum climb of 215' per NM to 14000.
- Rwy 16R: Standard with minimum climb of 465' per NM to 5934 then minimum climb of 280' per NM to 9300.
- Rwy 17L: Standard with minimum climb of 465' per NM to 5934 then minimum climb of 235' per NM to 14000.
- Rwy 17R: Standard with minimum climb of 400' per NM to 5934.
- Rwy 25: Standard with minimum climb of 500' per NM to 5934 then minimum climb of 220' per NM to 14000.
- Rwys 34L/R: Standard with minimum climb of 320' per NM to 5934 then minimum climb of 220' per NM to 14000.
- Rwy 35L: Standard with minimum climb of 285' per NM to 9000.
- Rwy 35R: Standard with minimum climb of 285' per NM to 9000.

(NARRATIVE ON FOLLOWING PAGE)

NOTE: Chart not to scale.

# EMMYS EIGHT DEPARTURE (RNAV)

(EMMYS8.ZIRKL) 17JUN21

DENVER, COLORADO

DENVER INTL (DEN)

SW-1, 11 JUL 2024 to 08 AUG 2024