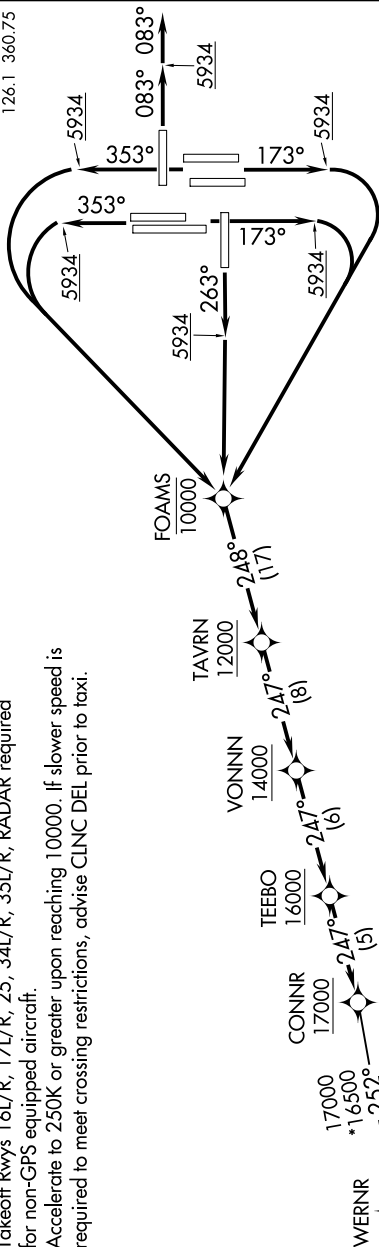


**TOP ALTITUDE:
FL230**

D-ATIS DEP
134.025
CLNC DEL
118.75
CPDIC
DENVER DEP CON
126.1 360.75



NOTE: Chart not to scale.

- NOTE: DME/DME/IRU or GPS required.
- NOTE: RNAV 1.
- NOTE: Turbojets only.
- NOTE: Takeoff Rwy 8 RADAR required.
- NOTE: Takeoff Rwys 16L/R, 17L/R, 25, 34L/R, 35L/R, RADAR required for non-GPS equipped aircraft.
- NOTE: Accelerate to 250K or greater upon reaching 10000. If slower speed is required to meet crossing restrictions, advise CLNC DEL prior to taxi.



TAKEOFF MINIMUMS

- Rwys 7, 26: NA - ATC.
- Rwy 8: Standard.
- Rwy 16L: Standard with minimum climb 425' per NM to 5934, then minimum climb of 210' per NM to 16000.
- Rwy 16R: Standard with minimum climb 420' per NM to 5934, then minimum climb of 250' per NM to 16000.
- Rwy 17L: Standard with minimum climb 450' per NM to 5934.
- Rwy 17R: Standard with minimum climb 460' per NM to 5934, then minimum climb of 205' per NM to 16000.
- Rwy 25: Standard with minimum climb 400' per NM to 5934, then minimum climb of 225' per NM to 16000.
- Rwys 34L/R: Standard with minimum climb 400' per NM to 5934, then minimum climb of 210' per NM to 16000.
- Rwys 35L/R: Standard with minimum climb 400' per NM to 5934.

(NARRATIVE ON FOLLOWING PAGE)