

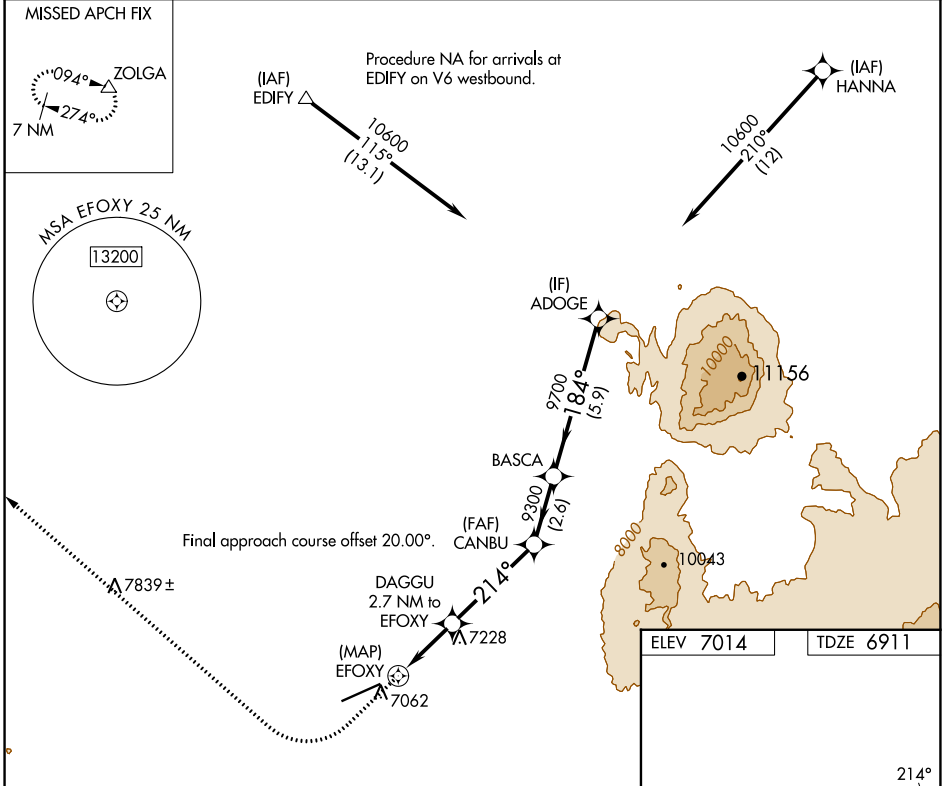
APP CRS <b>214°</b>	Rwy Idg <b>8801</b>
TDZE <b>6911</b>	Apt Elev <b>7014</b>

# RNAV (GPS) RWY 23

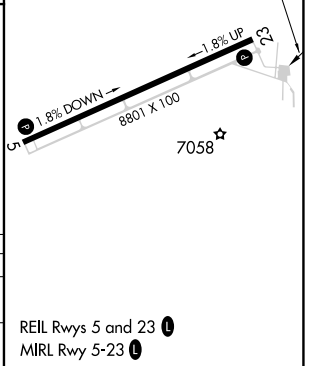
SHIVELY FLD (SAA)

RNP APCH - GPS.	MISSED APPROACH: Climb to 7800 then climbing right turn to 11000 direct ZOLGA and hold.
Rwy 23 helicopter visibility reduction below 3/4 SM NA.	

AWOS-3PT <b>118.175</b>	DENVER CENTER <b>132.1 254.35</b>	UNICOM <b>122.8 (CTAF) ①</b>
----------------------------	--------------------------------------	---------------------------------



7800	11000	ZOLGA					
<p>DAGGU 2.7 NM to EFOXY</p> <p>EFOXY 1.5 NM to EFOXY</p> <p>8000</p> <p>214°</p> <p>3.00° TCH 47</p> <p>9300</p> <p>9700</p> <p>10600</p> <p>184°</p>							
	0.7	1.5 NM	1.2 NM	4.1 NM	2.6 NM	5.9 NM	
CATEGORY	A		B		C		D
RNAV MDA	7620-1 709 (700-1)		7620-2 709 (700-2)				
CIRCLING	7620-1 606 (700-1)		7740-2 726 (800-2)		7860-2 846 (900-2 3/4)		



NW-1, 03 OCT 2024 to 31 OCT 2024

NW-1, 03 OCT 2024 to 31 OCT 2024