

WAAS CH 42833 W20A	APP CRS 201°	Rwy Idg TDZE Apt Elev	6307 4970 4970
--	------------------------	-----------------------------	---

RNAV (GPS) RWY 20

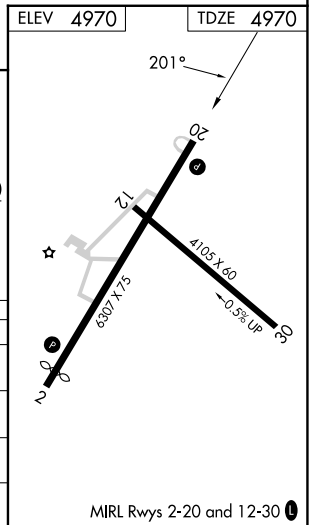
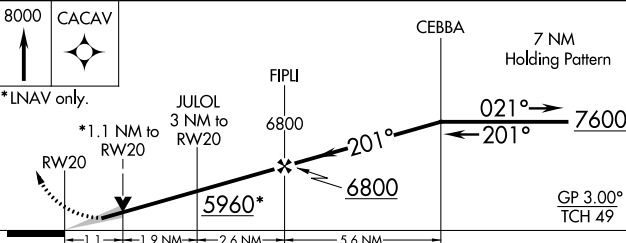
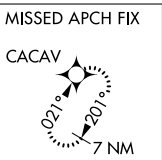
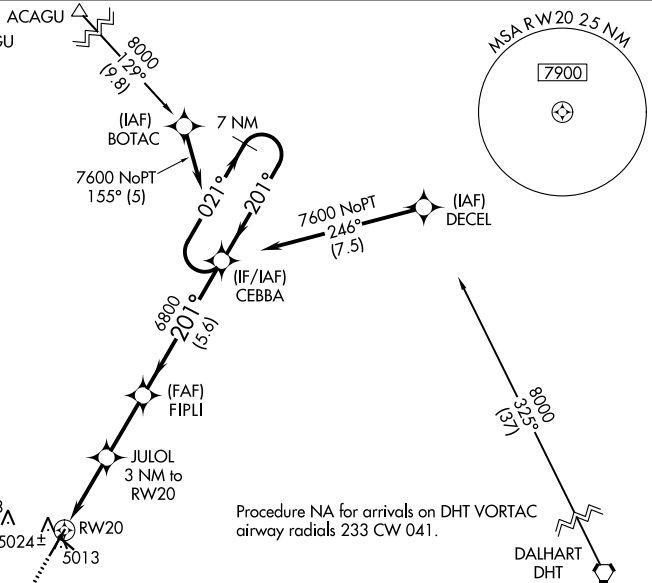
CLAYTON MUNI AIRPARK (CAO)

⚠ For uncompensated Baro-VNAV systems, LNAV/VNAV NA below -16°C (4°F) or above 54°C (130°F). Circling NA west of Rwy 2-20. DME/DME RNP-0.3 NA. When local altimeter setting not received, use Dalhart altimeter setting and increase all DA 227 feet and all MDA 240 feet, increase LPV all Cats visibility 7/8 mile, increase LNAV/VNAV all Cats visibility 3/4 mile, increase LNAV Cat C visibility 5/8 mile, and increase circling Cat C visibility 1/4 mile. Baro-VNAV and VDP NA when using Dalhart altimeter setting.

MISSED APPROACH: Climb to 8000 direct CACAV and hold, continue climb-in-hold to 8000.

ASOS 120.625	ALBUQUERQUE CENTER 127.85 285.475	UNICOM 122.8 (CTAF) 0
------------------------	---	---------------------------------

Procedure NA for arrivals at ACAGU on V81 northwest bound.



CATEGORY	A	B	C	D
LPV DA	5220-3/4	250 (300-3/4)		NA
LNAV/VNAV DA	5300-1 1/8	330 (400-1 1/8)		NA
LNAV MDA	5360-1	390 (400-1)	5360-1 1/8 390 (400-1 1/8)	NA
C CIRCLING	5360-1 390 (400-1)	5420-1 450 (500-1)	5420-1 1/2 450 (500-1 1/2)	NA

SW-1, 03 OCT 2024 to 31 OCT 2024

SW-1, 03 OCT 2024 to 31 OCT 2024