

APP CRS	Rwy Idg	<b>4002</b>
<b>181°</b>	TDZE	<b>444</b>
	Apt Elev	<b>444</b>

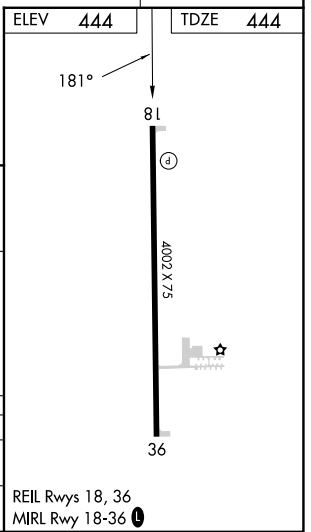
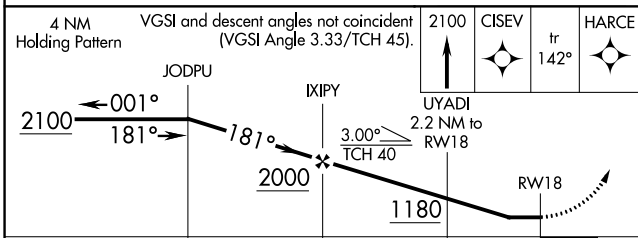
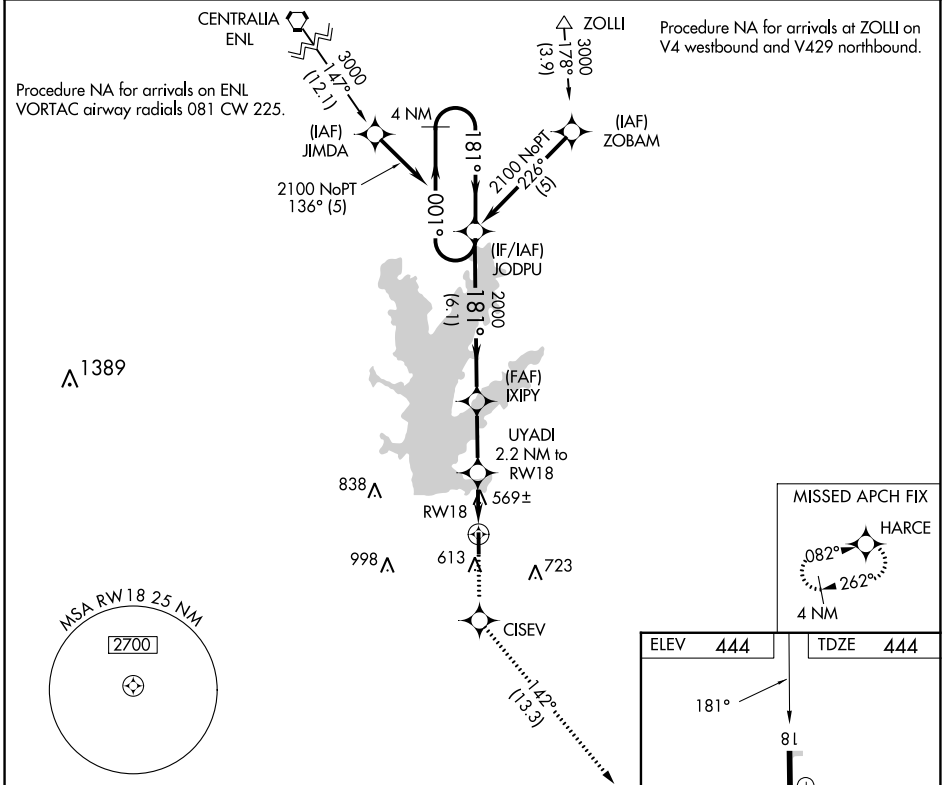
# RNAV (GPS) RWY 18

BENTON MUNI (H96)

**▼** DME/DME RNP-0.3 NA. Rwy 18 helicopter visibility reduction below 3/4 SM NA.  
 Use Marion altimeter setting; when not received, use Mount Vernon altimeter  
**▲ NA** setting and increase all MDA 20 feet and increase LNAV Cat C visibility to 1 1/4 mile.  
 Circling Rwy 36 NA at night.

MISSED APPROACH: Climb to 2100 direct CISEV and on track 142° to HARCE and hold.

MWA AWOS-3PT <b>119.675</b>	KANSAS CITY CENTER <b>127.475 346.275</b>	UNICOM <b>122.8 (CTAF) 0</b>
--------------------------------	--	---------------------------------



CATEGORY	A	B	C	D
LNAV MDA	860-1	416 (500-1)	860-1 1/8 416 (500-1 1/8)	NA
CIRCLING	1000-1	556 (600-1)	1120-2 676 (700-2)	NA

EC-3, 31 OCT 2024 to 28 NOV 2024

EC-3, 31 OCT 2024 to 28 NOV 2024