

APP CRS <b>305°</b>	Rwy Idg TDZE Apt Elev	<b>3704</b> <b>151</b> <b>151</b>
------------------------	-----------------------------	---

# RNAV (GPS) RWY 30

LIVINGSTON MUNI (ØØR)

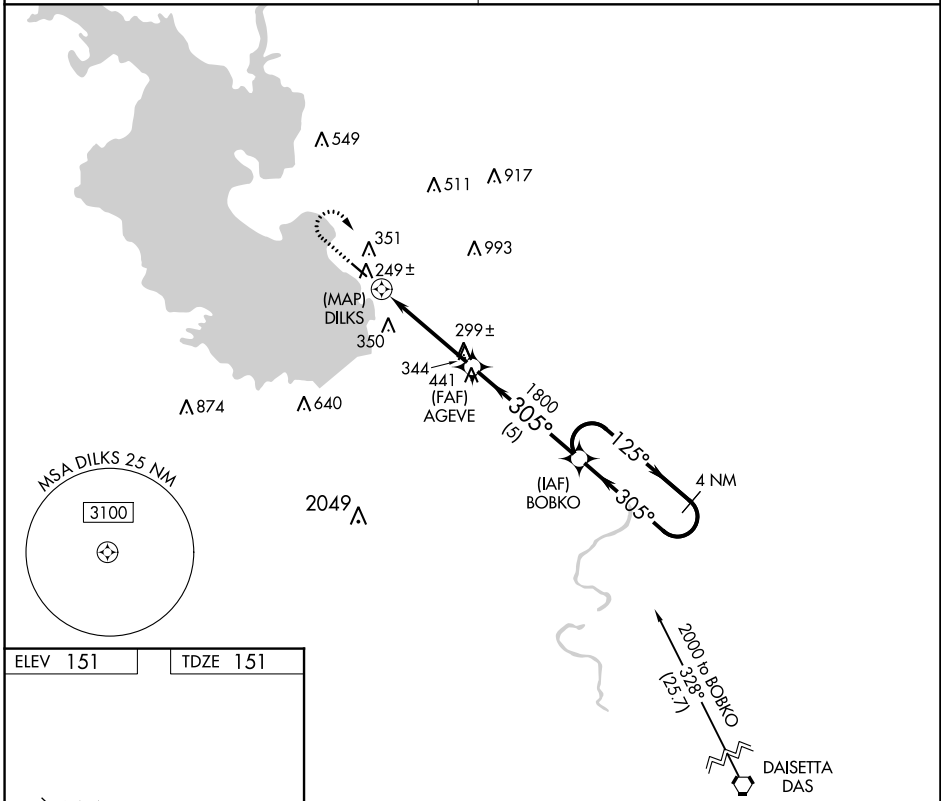
RNP APCH-GPS.

▼ Use Conroe/North Houston Rgnl altimeter setting. Rwy 30 helicopter  
 ▲ NA visibility reduction below 1 SM NA. Night landing: Rwy 30 NA.

MISSED APPROACH: Climb to 1000 then climbing right turn to 2000 direct BOBKO WP and hold.

HOUSTON CENTER  
**125.175 285.575**

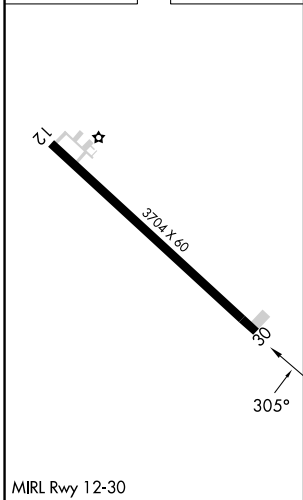
UNICOM  
**122.7 (CTAF)**



SC-5, 31 OCT 2024 to 28 NOV 2024

SC-5, 31 OCT 2024 to 28 NOV 2024

ELEV 151	TDZE 151
----------	----------



1000	2000	BOBKO	Visual Segment - Obstacles.	4 NM Holding Pattern
			AGEVE	BOBKO
	DILKS	1800	305°	125° → 2000
0.7	4.3 NM	5 NM		
CATEGORY	A	B	C	D
LNAV MDA	680-1	529 (600-1)	680-1½ 529 (600-1½)	NA
CIRCLING	800-1	649 (700-1)	800-1¾ 649 (700-1¾)	NA

LIVINGSTON, TEXAS  
Orig-D 07OCT21

30°41'N-95°01'W

# RNAV (GPS) RWY 30

LIVINGSTON MUNI (ØØR)