

WAAS CH <b>77729</b> <b>W30A</b>	APP CRS <b>295°</b>	Rwy Idg TDZE Apt Elev	<b>3901</b> <b>810</b> <b>813</b>
--	------------------------	-----------------------------	---

# RNAV (GPS) RWY 30

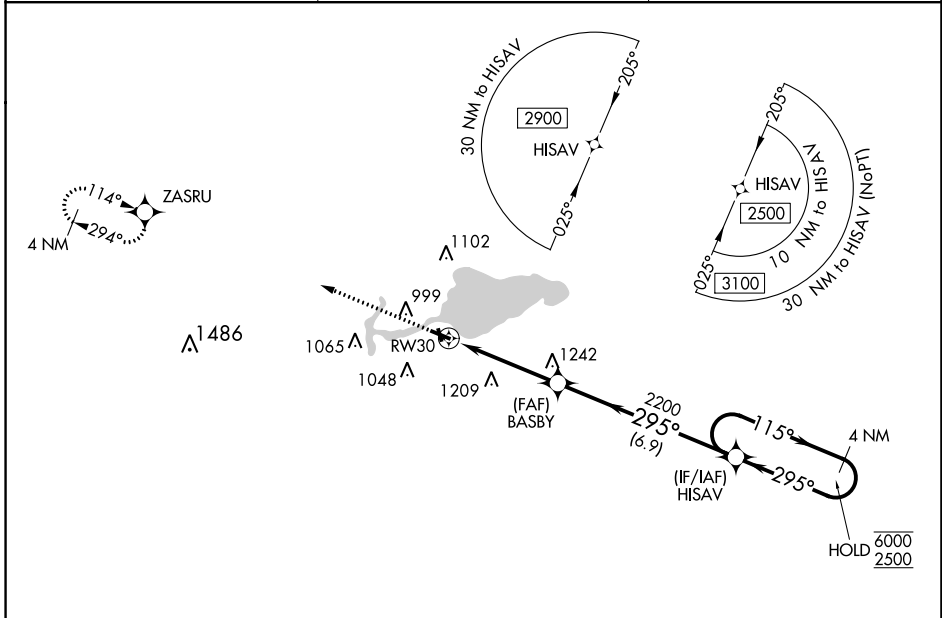
SHAWANO MUNI (E/ZS)

RNP APCH - GPS.

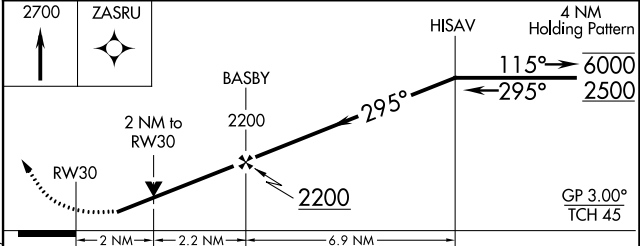
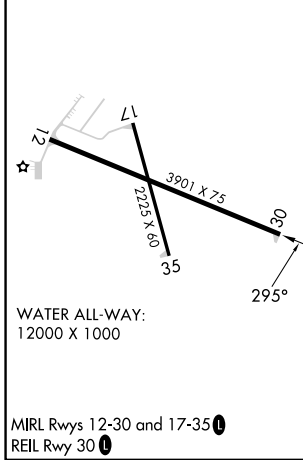
**▼** Rwy 30 helicopter visibility reduction below 3/4 SM NA. For uncompensated Baro-VNAV systems, LNAV/VNAV NA below -16°C or above 54°C. Circling to Rwy 12, 35 NA at night.

**▲** MISSED APPROACH: Climb to 2700 direct ZASRU and hold.

AWOS-3 <b>118.65</b>	GREEN BAY APP CON ★ <b>119.4 338.2</b>	UNICOM <b>122.8 (CTAF) ①</b>
-------------------------	---	---------------------------------



ELEV 813	TDZE 810
----------	----------



CATEGORY	A	B	C	D
LPV DA	1097-1		287 (300-1)	
LNAV/VNAV DA	1456-1 7/8		646 (700-1 7/8)	
LNAV MDA	1500-1	690 (700-1)	1500-2	690 (700-2)
<b>C</b> CIRCLING	1500-1	687 (700-1)	1680-2 1/2 867 (900-2 1/2)	1680-2 3/4 867 (900-2 3/4)

EC-3, 31 OCT 2024 to 28 NOV 2024

EC-3, 31 OCT 2024 to 28 NOV 2024