

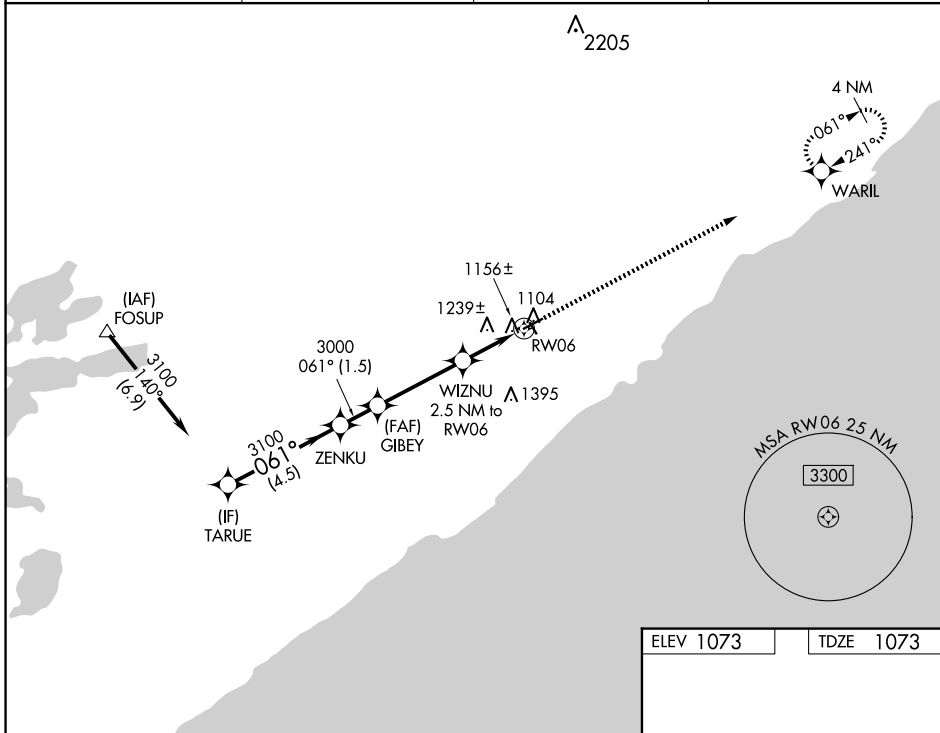
WAAS CH <b>53721</b> <b>W06A</b>	APP CRS <b>061°</b>	Rwy Idg TDZE Apt Elev	<b>4400</b> <b>1073</b> <b>1073</b>
----------------------------------------	------------------------	-----------------------------	-------------------------------------------

# RNAV (GPS) RWY 6

RICHARD B HELGESON (TWM)

RNP APCH.	MISSED APPROACH: Climb to 3000 direct WARIL and hold.
<p>▼ When local altimeter setting not received, use Duluth Intl altimeter setting and increase all MDA 120 feet. VDP NA when using Duluth Intl altimeter setting. Rwy 6 helicopter visibility reduction below 3/4 SM NA. Circling Rwy 15, 33 NA.</p>	

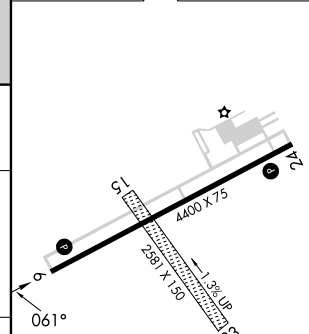
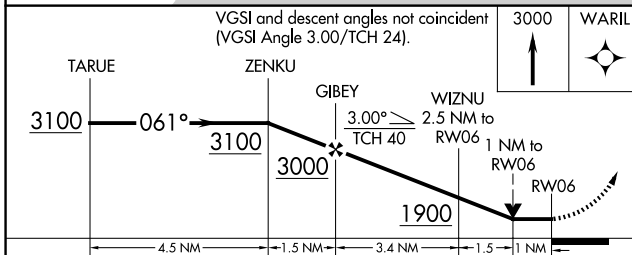
AWOS-3PT <b>119.325</b>	DULUTH APP CON <b>125.45 233.7</b>	GCO <b>121.725</b>	CTAF <b>122.9</b>
----------------------------	---------------------------------------	-----------------------	----------------------



NC-1, 23 JAN 2025 to 20 FEB 2025

NC-1, 23 JAN 2025 to 20 FEB 2025

ELEV 1073	TDZE 1073
-----------	-----------



CATEGORY	A	B	C	D
LP MDA	1420-1	347 (400-1)		NA
LNAV MDA	1500-1	427 (500-1)		NA
CIRCLING	1600-1 527 (600-1)	1760-1 687 (700-1)		NA

MIRL Rwy 6-24  
REIL Rws 6 and 24