

WAAS CH 72823 W36A	APP CRS 359°	Rwy Idg TDZE Apt Elev	4001 1115 1115
--	------------------------	-----------------------------	---

RNAV (GPS) RWY 36

OSCEOLA MUNI (I75)

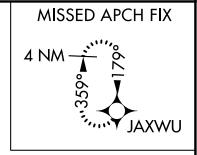
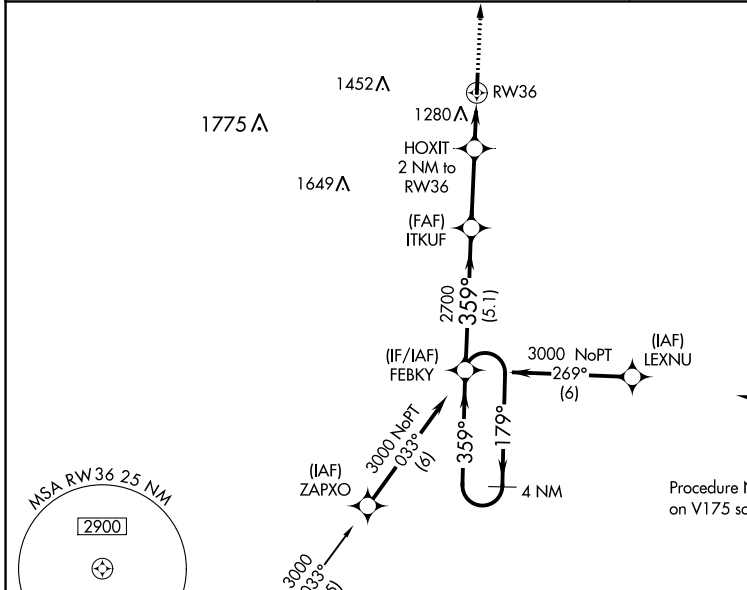
⚠ When VGSI inop, Circling Rwy 18 NA at night. Baro-VNAV NA when using Chariton altimeter setting. For uncompensated Baro-VNAV systems, LNAV/VNAV NA below -17°C (2°F) or above 54°C (130°F). DME/DME RNP-0.3 NA. VDP NA with Chariton altimeter setting. When local altimeter setting not received, use Chariton altimeter setting and increase all DA 44 feet and all MDA 60 feet. Increase LPV all Cats visibility to 1 mile and LNAV/VNAV all Cats visibility to 1 ¼ mile. Visibility reduction by helicopters NA.

MISSED APPROACH:
Climb to 3000 direct JAXWU and hold.

AWOS-3
120.975

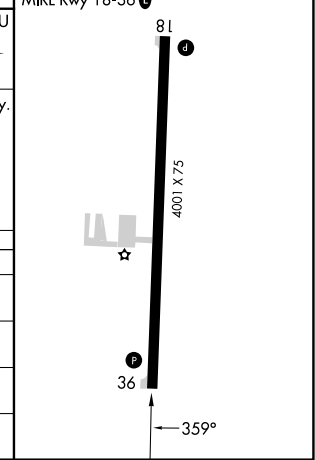
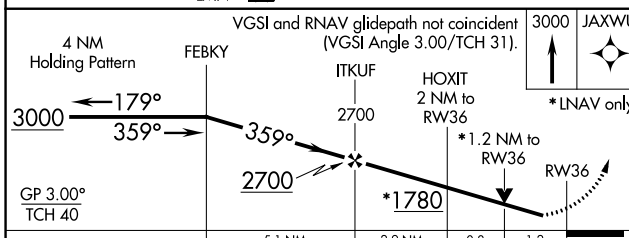
DES MOINES APP CON
123.9 360.7

UNICOM
122.8 (CTAF) 0



Procedure NA for arrivals on LMN VOR/DME airway radials 009 CW 106.

ELEV 1115	TDZE 1115
REIL Rwy 18 and 36	
MIRL Rwy 18-36	



CATEGORY	A	B	C	D
LPV DA	1365-7/8	250 (300-7/8)		NA
LNAV/VNAV DA	1423-1	308 (400-1)		NA
LNAV MDA	1540-1	425 (500-1)		NA
CIRCLING	1580-1	465 (500-1)		NA

NC-3, 31 OCT 2024 to 28 NOV 2024

NC-3, 31 OCT 2024 to 28 NOV 2024