

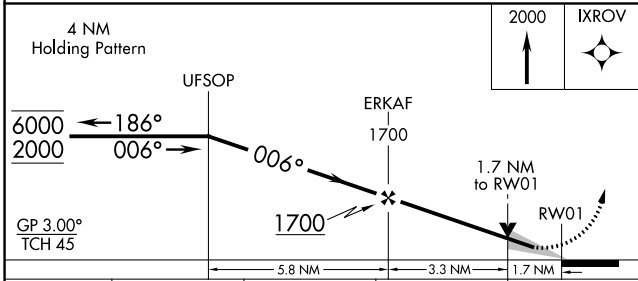
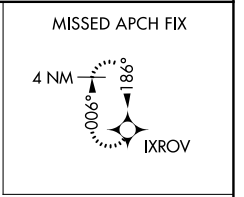
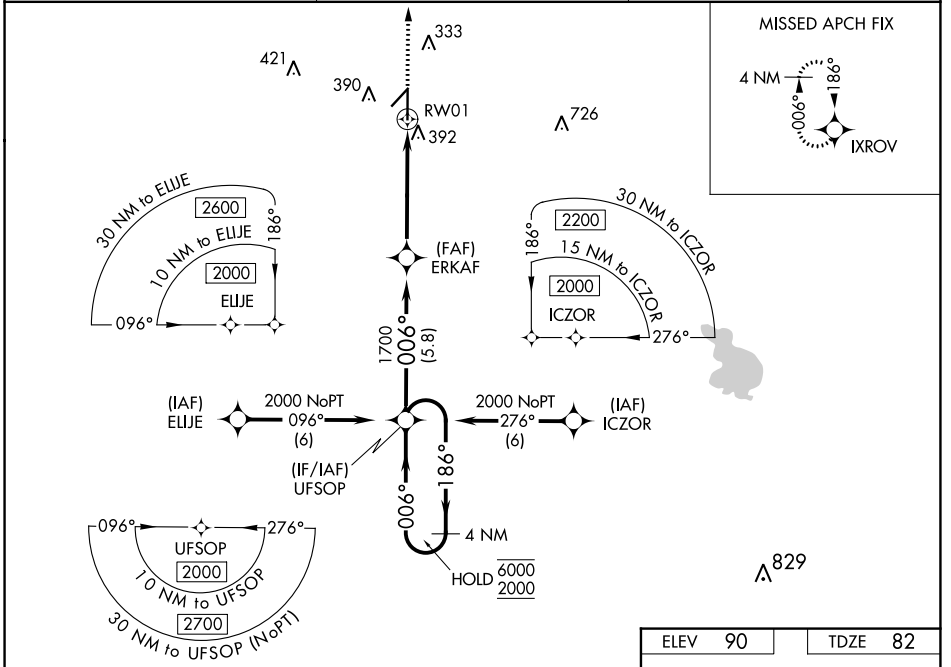
WAAS CH 69636 W01A	APP CRS 006°	Rwy Idg TDZE Apt Elev	6201 82 90
--	------------------------	-----------------------------	---------------------------------------

RNAV (GPS) RWY 1

ZEPHYRHILLS MUNI (ZPH)

RNP APCH - GPS	MISSED APPROACH: Climb to 2000 direct IXROV and hold.
<p>▼ For uncompensated Baro-VNAV systems, LNAV/VNAV NA below -15°C or above 54°C.</p> <p>▲</p>	

AWOS-3PT 118.975	TAMPA APP CON 119.9 290.3	UNICOM 123.075 (CTAF) 1
----------------------------	-------------------------------------	--



ELEV 90	TDZE 82
---------	---------

6201 X 100, 800 X 100, 6201 X 100

MIRL Rwy 5-23, HIRL Rwy 1-19, REIL Rwy 1 and 19

CATEGORY	A	B	C	D
LPV DA		332-7/8	250 (300-7/8)	
LNAV/VNAV DA		553-13/8	471 (500-13/8)	
LNAV MDA	660-1	578 (600-1)	660-15/8	578 (600-15/8)
CIRCLING	700-1	610 (700-1)	700-13/4	780-21/4
			610 (700-13/4)	690 (700-21/4)

SE-3, 31 OCT 2024 to 28 NOV 2024

SE-3, 31 OCT 2024 to 28 NOV 2024