

WAAS CH <b>99740</b> <b>W19A</b>	APP CRS <b>187°</b>	Rwy Idg TDZE Apt Elev	<b>6200</b> <b>1303</b> <b>1303</b>
--	------------------------	-----------------------------	---

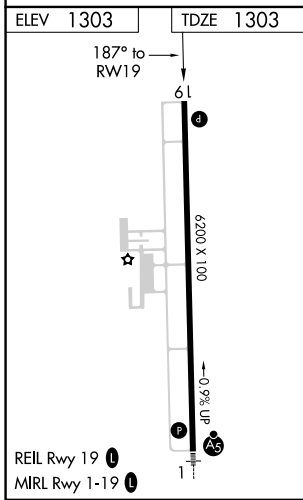
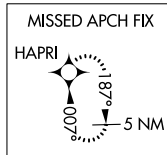
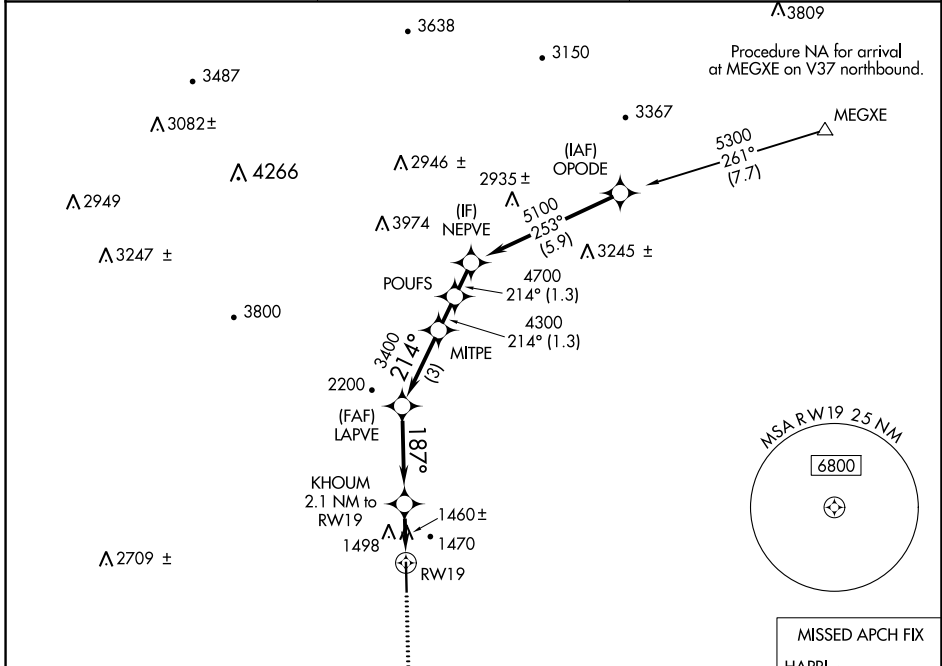
# RNAV (GPS) RWY 19

WILKES COUNTY (UKF)

**⚠** DME/DME RNP-0.3 NA. VDP NA when using Hickory altimeter setting. When local altimeter setting not received, use Hickory altimeter setting and increase all MDAs 100 feet and LP and LNAV visibility Cats C/D ¼ SM and increase Circling visibility Cat C ½ SM. Rwy 19 helicopter visibility reduction below ¾ SM NA.

**MISSED APPROACH:** Climb to 5000 direct HAPRI and hold, continue climb-in-hold to 5000.

AWOS-3 <b>126.625</b>	ATLANTA CENTER <b>125.15 263.0</b>	UNICOM <b>122.7 (CTAF) 0</b>
--------------------------	---------------------------------------	---------------------------------



5000	HAPRI	VGSI and descent angles not coincident (VGSI Angle 3.00/TCH 47).	NEPVE	
↑	⬠		⬠	
	KHOUM	2.1 NM to RWY 19	POUFS	
	LAPVE	MITPE	NEPVE	
	2100	3400	4700 5100	
	1.2 NM to RWY 19	3.45° TCH 47	214°	
	1.2	0.9	3.5 NM	
			3 NM	
			1.3 NM	
			1.3 NM	
CATEGORY	A	B	C	D
LP MDA	1720-1	417 (500-1)	1720-1½	417 (500-1½)
LNAV MDA	1760-1	457 (500-1)	1760-1¾	457 (500-1¾)
<b>C</b> CIRCLING	1800-1	1880-1	1880-1½	2240-3
	497 (500-1)	577 (600-1)	577 (600-1½)	937 (1000-3)

SE-2, 03 OCT 2024 to 31 OCT 2024

SE-2, 03 OCT 2024 to 31 OCT 2024