


LOC/DME I-UKF 111.55 Chan 52(Y)	APP CRS 007°	Rwy Idg TDZE 6200 1276 Apt Elev 1303
--	------------------------	--

ILS Z or LOC Z RWY 1

WILKES COUNTY (UKF)

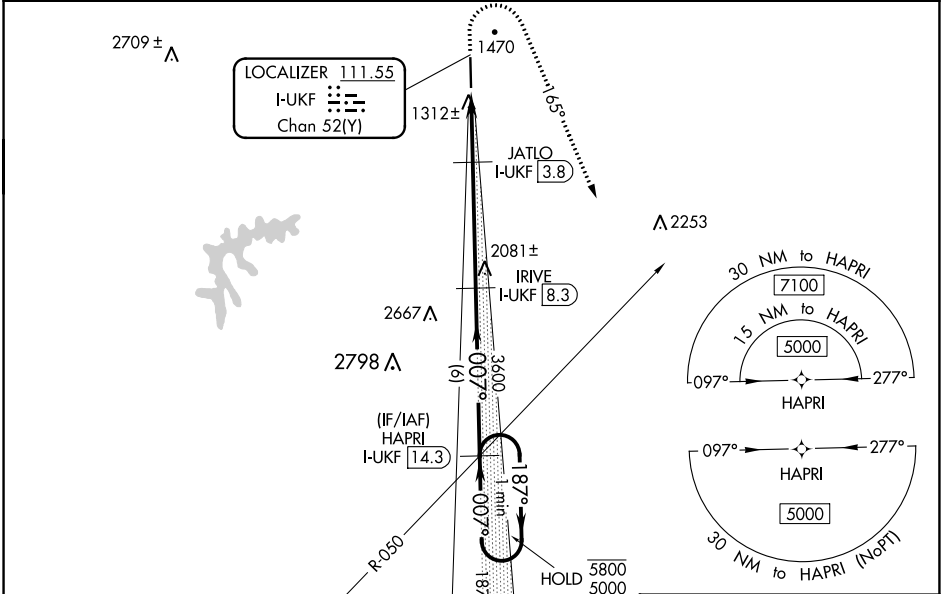
DME required. RNAV 1-GPS required.


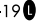
VDP NA when using Hickory altimeter setting. When local altimeter setting not received, use Hickory altimeter setting and increase S-ILS DA to 1569 feet and all MDAs 100 feet, and increase S-LOC Cats C/D visibility 3/8 SM and Circling Cat C visibility 1/2 SM. For inop ALS when using Hickory altimeter setting, increase S-ILS all Cats visibility and S-LOC Cat C/D visibility 3/8 SM.

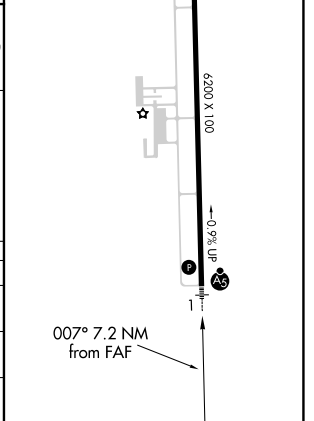
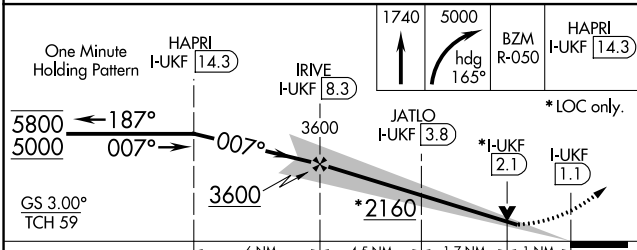
MALSR 

MISSED APPROACH: Climb to 1740 then climbing right turn to 5000 heading 165° and BZM VOR/DME R-050 direct HAPRI/ I-UKF 14.3 DME and hold, continue climb-in-hold to 5000.

AWOS-3 126,625	ATLANTA CENTER 125.15 263.0	UNICOM 122.7 (CTAF)
--------------------------	---------------------------------------	-------------------------------



ELEV 1303	TDZE 1276
REIL Rwy 19 	
MRL Rwy 1-19 	



CATEGORY	A	B	C	D
S-ILS 1	1476-1/2		200 (200-1/2)	
S-LOC 1	1640-1/2	364 (400-1/2)	1640-5/8	364 (400-5/8)
CIRCLING	1800-1 497 (500-1)	1880-1 577 (600-1)	1880-1 1/2 577 (600-1 1/2)	2240-3 937 (1000-3)