

WAAS CH <b>48915</b> <b>W36A</b>	APP CRS <b>005°</b>	Rwy Idg <b>5001</b> TDZE <b>458</b> Apt Elev <b>458</b>
--	------------------------	---

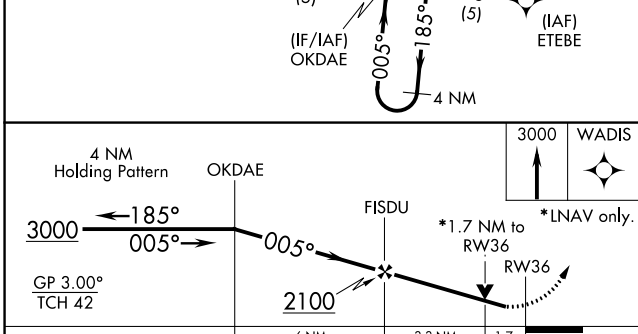
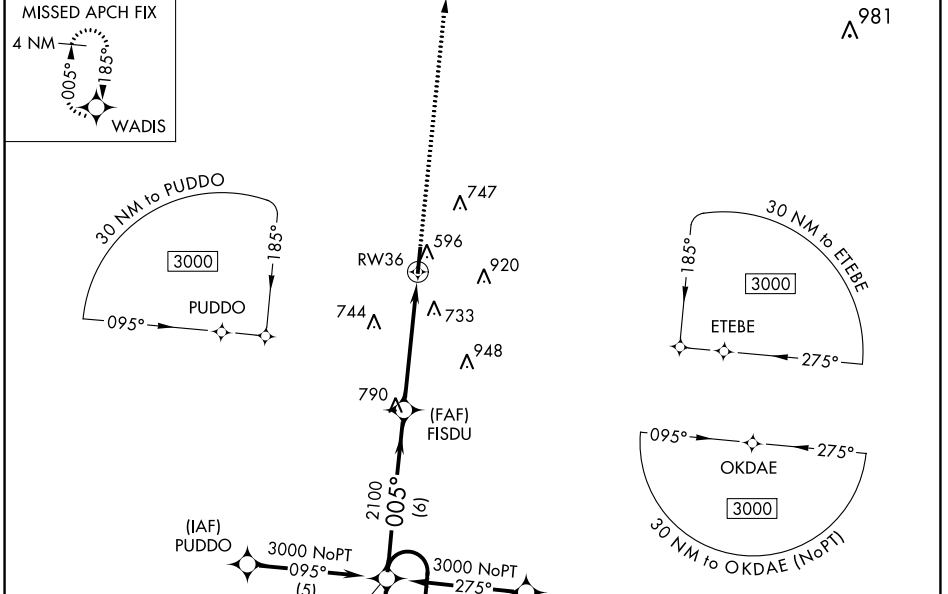
# RNAV (GPS) RWY 36

PHILADELPHIA MUNI (MPPE)

**⚠** For uncompensated Baro-VNAV systems, LNAV/VNAV NA below -1.5°C (5°F) or above 48°C (118°F). DME/DME RNP-0.3 NA. Visibility reduction by helicopters NA. When local altimeter setting not received, use Key Fld altimeter setting and increase all DA 101 feet and all MDA 120 feet and increase LPV, LNAV/VNAV all Cats, LNAV Cats C and D visibility ½ mile, increase Circling Cats C and D visibility ¼ mile. Baro-VNAV and VDP NA when using Key Fld altimeter setting.

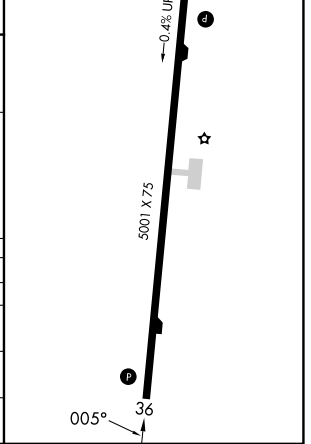
**MISSED APPROACH:**  
Climb to 3000 direct WADIS and hold.

AWOS-3P <b>118.725</b>	MEMPHIS CENTER <b>132.75 263.0</b>	UNICOM <b>123.0 (CTAF)</b>
---------------------------	---------------------------------------	-------------------------------



ELEV 458	TDZE 458
----------	----------

REIL Rwy 18 and 36  
MIRL Rwy 18-36



CATEGORY	A	B	C	D
LPV DA		838-1¼	380 (400-1¼)	
LNAV/VNAV DA		1107-2¼	649 (700-2¼)	
LNAV MDA	1040-1	582 (600-1)	1040-1½ 582 (600-1½)	1040-1¾ 582 (600-1¾)
CIRCLING	1060-1	602 (700-1)	1280-2½ 822 (900-2½)	1280-2¾ 822 (900-2¾)

SC-4, 31 OCT 2024 to 28 NOV 2024

SC-4, 31 OCT 2024 to 28 NOV 2024