

WAAS CH 40436 W35A	APP CRS 354°	Rwy Idg TDZE Apt Elev	3406 1435 1437
--	------------------------	-----------------------------	---

RNAV (GPS) RWY 35

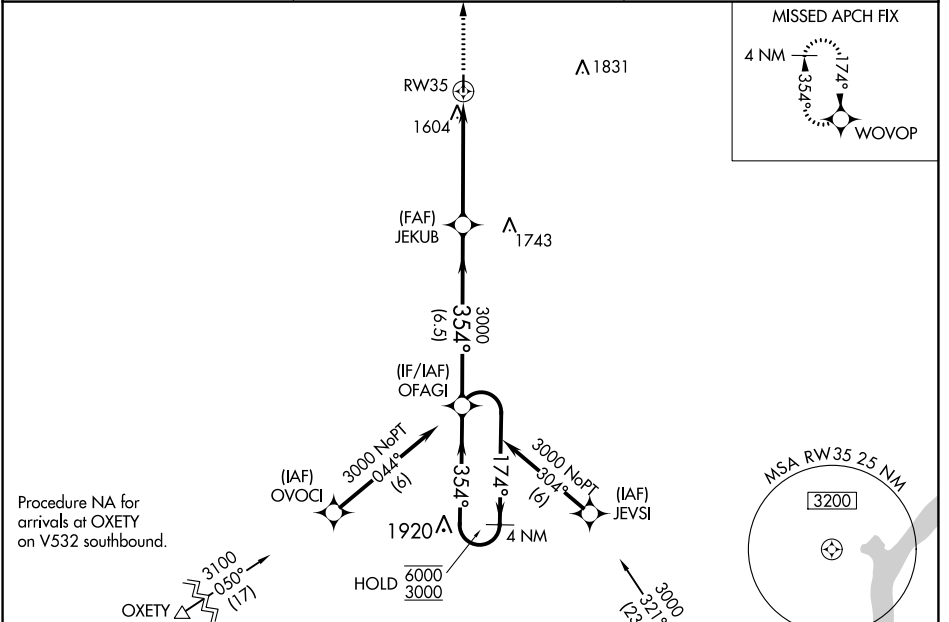
WASHINGTON COUNTY VETERAN'S MEML (K38)

RNP APCH - GPS.

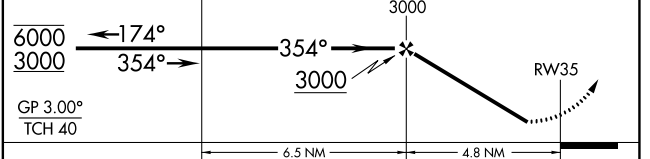
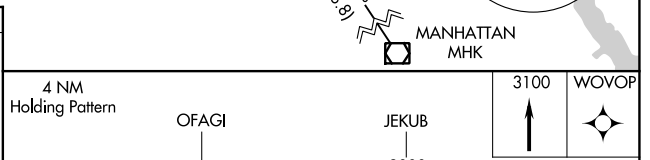
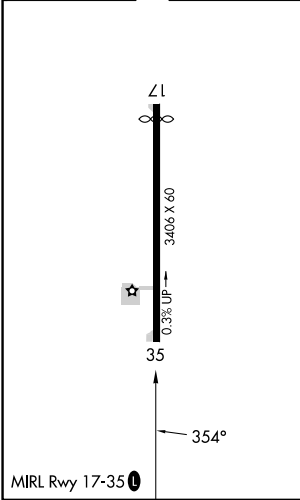
NA Circling Rwy 17 NA at night.
Rwy 35 helicopter visibility reduction below 3/4 SM NA.
Baro-VNAV NA. Use Concordia altimeter setting.

MISSED APPROACH: Climb to 3100 direct WOVOP and hold.

CNK ASOS 123.825	KANSAS CITY CENTER 127.35 257.975	CTAF 122.9
----------------------------	---	----------------------



ELEV 1437	TDZE 1435
------------------	------------------



CATEGORY	A	B	C	D
LPV DA	1762-1		327 (400-1)	NA
LNAV/VNAV DA	1827-1 1/8		392 (400-1 1/8)	NA
LNAV MDA	2020-1	585 (600-1)	2020-1 3/4 585 (600-1 3/4)	NA
C CIRCLING	2020-1	583 (600-1)	2020-1 3/4 583 (600-1 3/4)	NA

NC-2, 31 OCT 2024 to 28 NOV 2024

NC-2, 31 OCT 2024 to 28 NOV 2024