

APP CRS	Rwy Idg	3700
354°	TDZE	12
	Apt Elev	12

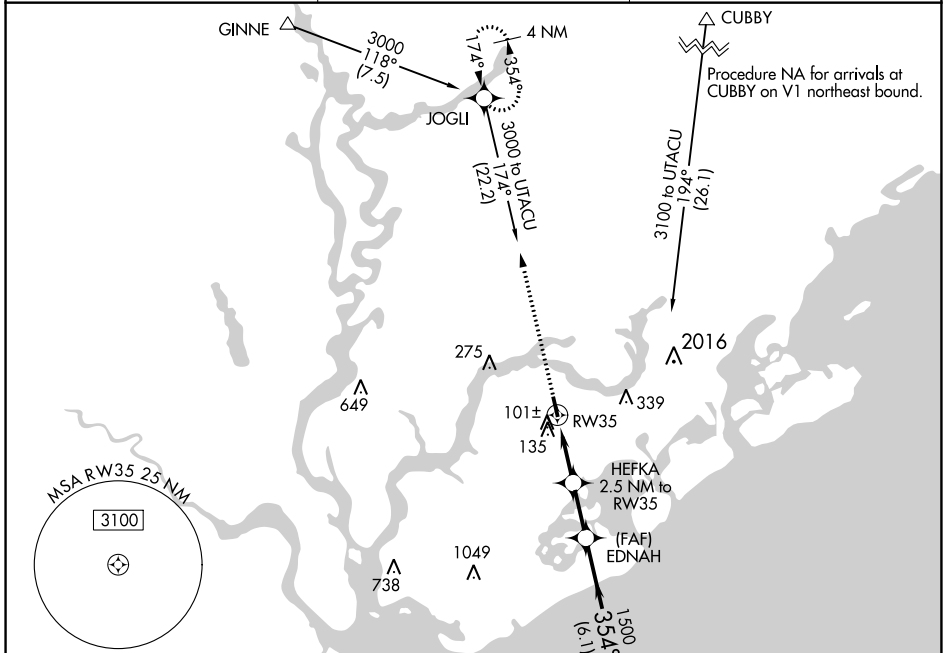
RNAV (GPS) RWY 35

MT PLEASANT RGNL-FAISON FLD (L.R.O)

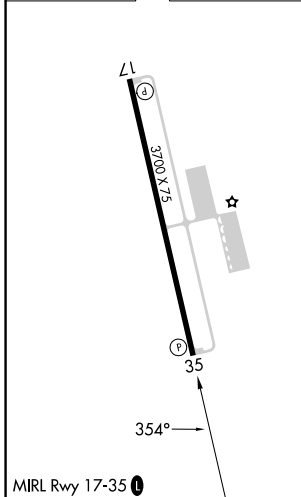
RNP APCH. MISSED APPROACH: Climb to 3000 direct JOGLI and hold, continue climb-in-hold to 3000.

⚠ When local altimeter setting not received, use Charleston AFB/Intl altimeter setting and increase all MDA 40 feet, and LNAV Cat C visibility 1/8 mile.

AWOS-3 118.625	CHARLESTON APP CON 121.275 379.925	UNICOM 122.7 (CTAF) 0
--------------------------	--	---------------------------------



ELEV 12	TDZE 12
---------	---------



3000	JOGLI	VGSIs and descent angles not coincident (VGSi Angle 4.00/TCH 27).		4 NM
		HEFKA 2.5 NM to RW35	EDNAH	UTACU Holding Pattern
		3.04° TCH 35	354°	174° → 3000
		840	1500	← 354°
		2.5 NM	2 NM	6.1 NM
CATEGORY	A	B	C	D
LNAV MDA	380-1 368 (400-1)			NA
CIRCLING	460-1 448 (500-1)	520-1 508 (600-1)	640-1 3/4 628 (700-1 3/4)	NA

SE-2, 05 SEP 2024 to 03 OCT 2024

SE-2, 05 SEP 2024 to 03 OCT 2024