

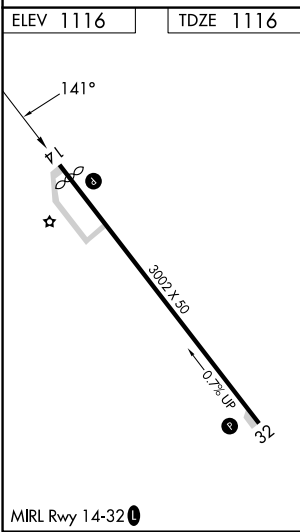
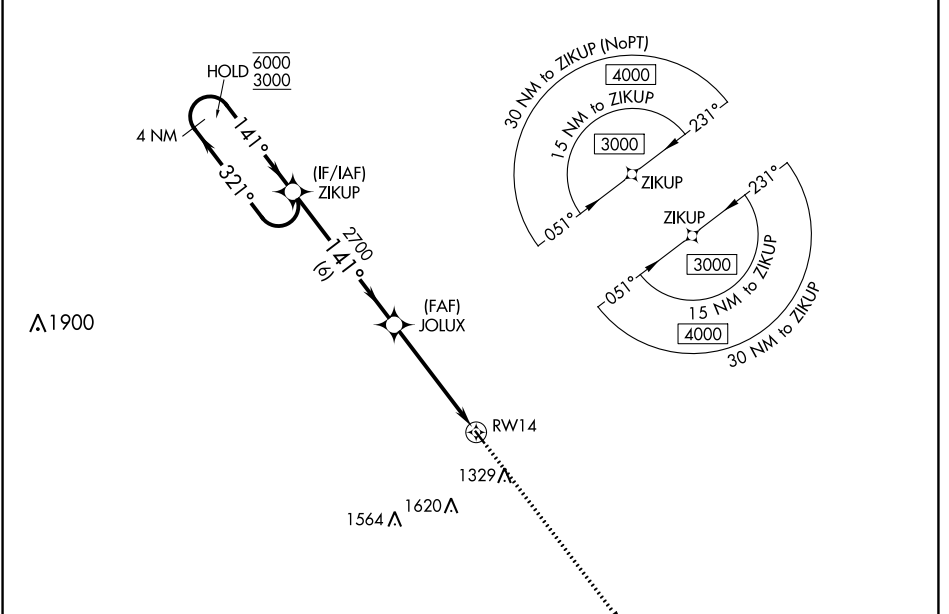
APP CRS	Rwy Idg	2827
141°	TDZE	1116
	Apt Elev	1116

RNAV (GPS) RWY 14

WINTERSET MUNI (3Y3)

RNP APCH.	<p>▼ Circling NA for Cat B southwest of Rwy 14-32. Procedure NA at night.</p> <p>▲ NA Rwy 14 helicopter visibility reduction below 1 SM NA. Use Osceola alimeter setting.</p>	MISSED APPROACH: Climb to 3000 direct JUNUG and hold.
-----------	---	---

I75 AWOS-3 120.975	DES MOINES APP CON 123.9 360.7	UNICOM 122.7 (CTAF) 0
------------------------------	--	---------------------------------



ELEV 1116	TDZE 1116	VGSi and descent angles not coincident (VGSi Angle 3.00/TCH 32).		3000	JUNUG
4 NM Holding Pattern		ZIKUP	JOLUX	RWY 14	
6000	← 321°	→ 141°	2700	3.00%	TCH 40
		6 NM		4.9 NM	
CATEGORY	A	B	C	D	
LNAV MDA	1640-1	524 (600-1)	NA		
CIRCLING	1640-1	1700-1	NA		
	524 (600-1)	584 (600-1)			

NC-3, 03 OCT 2024 to 31 OCT 2024

NC-3, 03 OCT 2024 to 31 OCT 2024